

PARTS & SERVICE NEWS

REF NO.	AT03244
DATE	Dec. 26, 2003
(C) Page 1 of 10	

SUBJECT: WA700-3/WA800-3/WA900-3/WA1200-3
REPAIR OF BACKLASH AT ARM REST AREA

PURPOSE: To introduce modification procedure to repair the backlash of the AJSS arm rest section on WA700-3, WA800-3, WA900-3 and WA1200-3 wheel loaders

APPLICATION: WA700-3 Wheel Loaders, Serial Nos. 50001 thru 51012, 51014
WA800-3 Wheel Loaders, Serial Nos. 50001 thru 50039
WA900-3 Wheel Loaders, Serial Nos. 50001 thru 50033
WA1200-3 Wheel Loaders, Serial Nos. 50001 thru 50077

FAILURE CODE: 4A20GC

DESCRIPTION:

1. Introduction

On the WA700-3 thru WA1200-3 wheel loaders equipped with the AJSS, owing to insufficient rigidity of the arm rest section and to looseness of the rail, the arm rest may have backlash hindering the operations of the operator.

When the above failure has occurred, make the modification being introduced in this Service News to repair the backlash of the AJSS arm rest section.

CONTENTS

1. Cover Page 1

2. Contents Page 2

3. Lists of parts Page 3

4. Details of the modification Page 4

5. Preparations for reworking and removal of the parts Page 5

6. Reworking procedure

 1) Reworking of the AJSS base bracket Pages 6 and 7

 2) Reworking of the AJSS slide bracket Page 8

7. Table of parts necessary for reworking
 (When preparing these parts locally) Page 9

8. Installation procedure Page 10

<https://hespareparts.com/>

3. List of parts

Assembling parts

Part No.	Part Name	Purpose of part	Q'ty	Remarks
421-43-18711	Bearing	}	2	
01643-30623	Washer		4	
01580-10605	Nut		2	
427-40-22150	Plate		2	
01435-00820	Bolt		4	
427-40-22140 (42C-40-12290)	Rail (Rail)	}	1 (1)	
01435-00820 (01435-00814)	Bolt (Bolt)		2 (2)	
01643-30823	Washer	}	1	
01580-10806	Nut		1	
42C-40-12421 (42C-40-12420)	Bushing (Bushing)	}	1 (1)	
42C-40-12131 (42C-40-12130)	Cover (Cover)		1 (1)	

Parts necessary for reworking

(When making these parts locally, refer to page 9.)

Part No.	Part Name	Purpose of part	Q'ty	Remarks
428-40-22210	Plate	}	1	
428-40-22220	Bracket		1	
428-40-22230	Bracket		1	
428-40-22240	Plate		1	
428-40-22250	Plate		2	
01573-28205	Seat		2	

4. Details of the modification

- (1) Addition of the roller bearing
- (2) Increase of the permissible static load for the slider
- (3) Change of the material of the slide bushing
- (4) Increase of the rigidity of the front cover

For details, refer to Fig. 1.

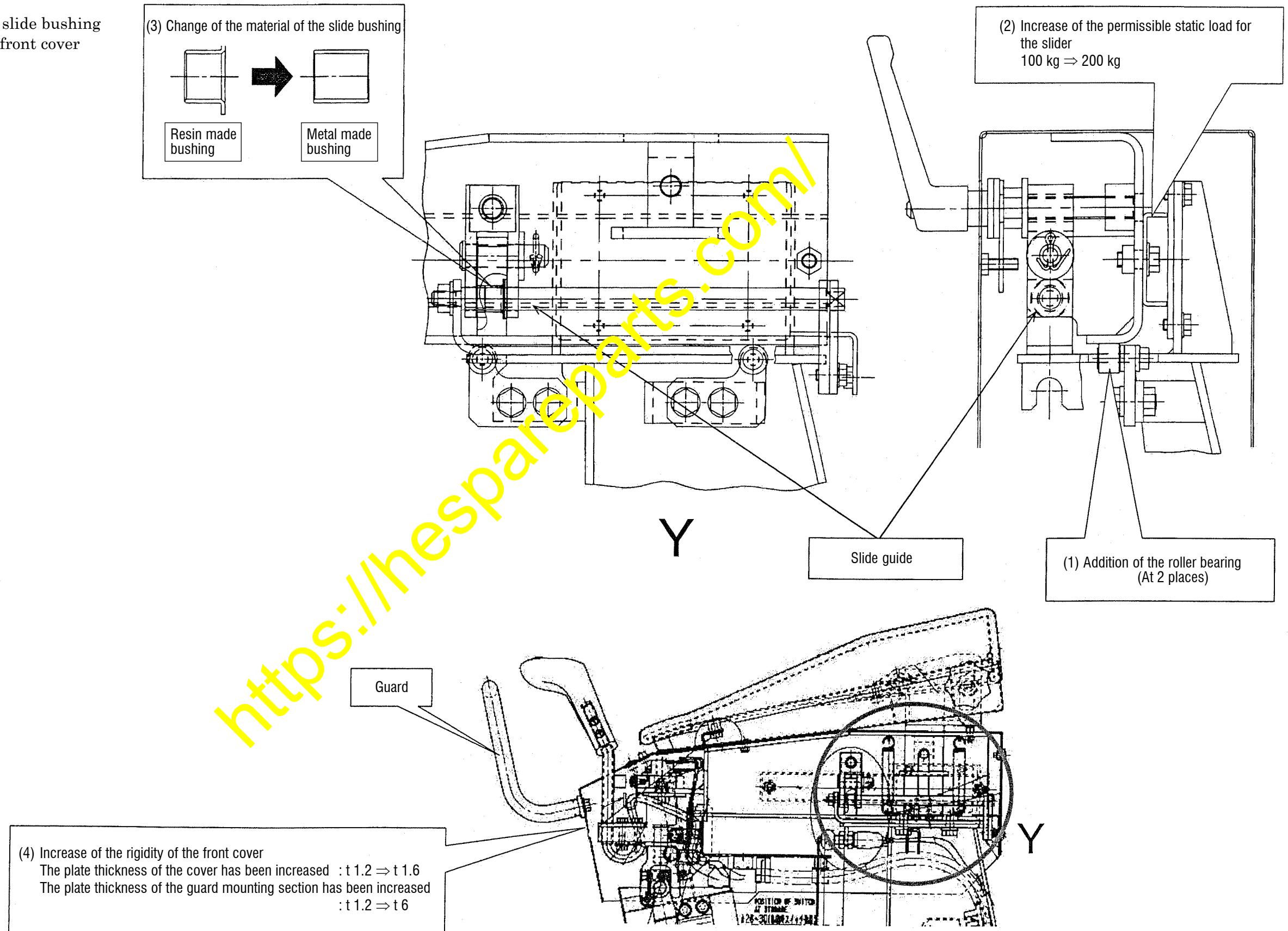
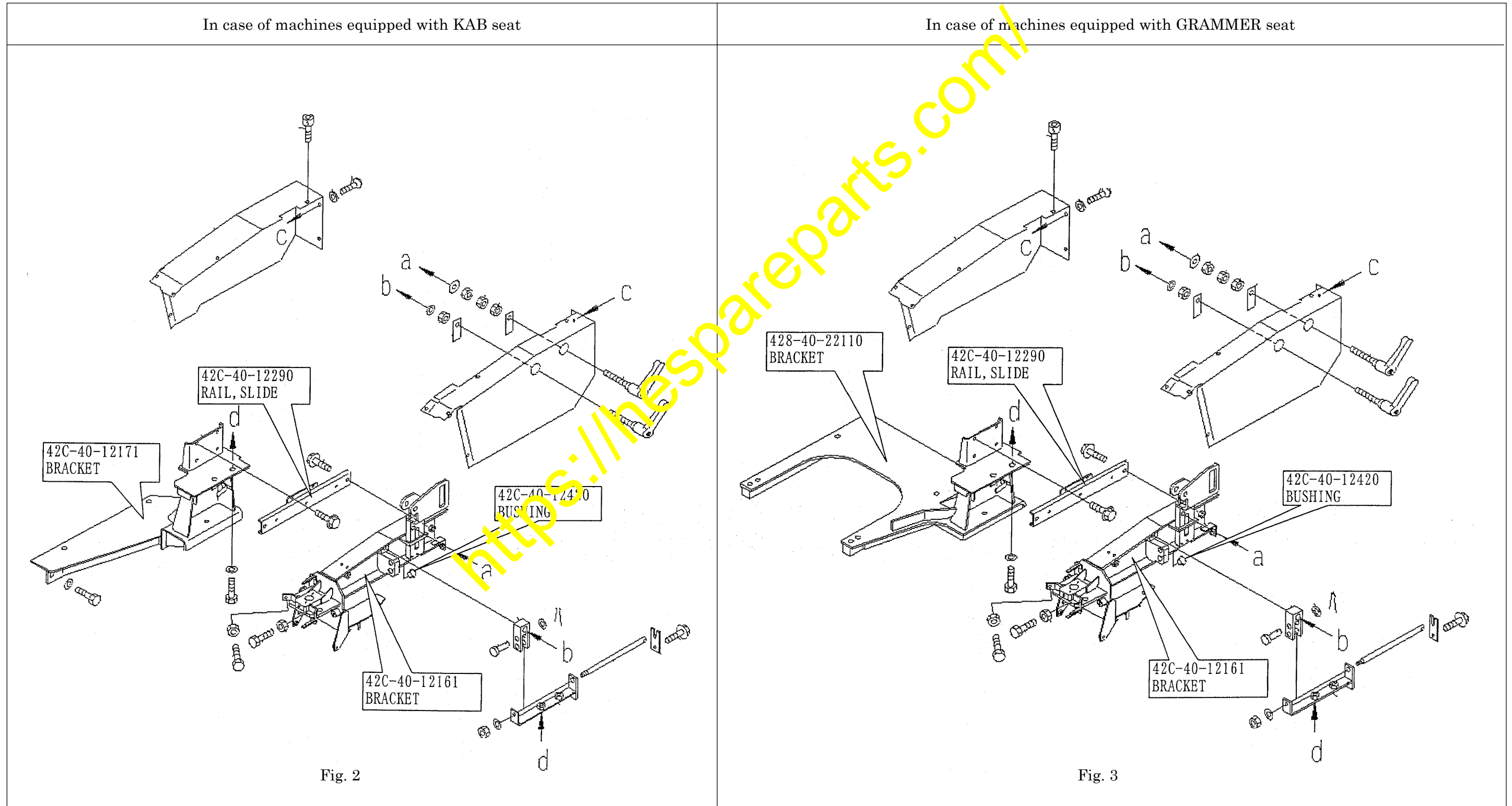


Fig. 1

5. Preparations for reworking and removal of the parts

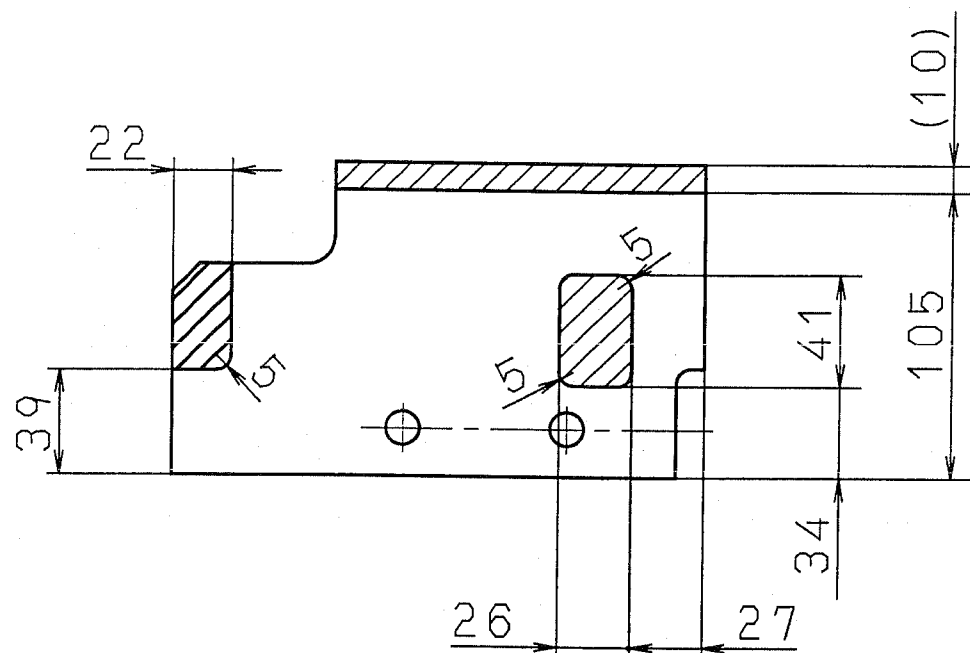
- (1) To make reworking, remove the parts with their part numbers shown in Fig. 2 or Fig. 3.
- (2) Since removed bolts and washers are being reused when carrying out the reinstallation work, store them carefully.
 - Regarding the part numbers of the bolts and washers, refer to the Parts Catalog.



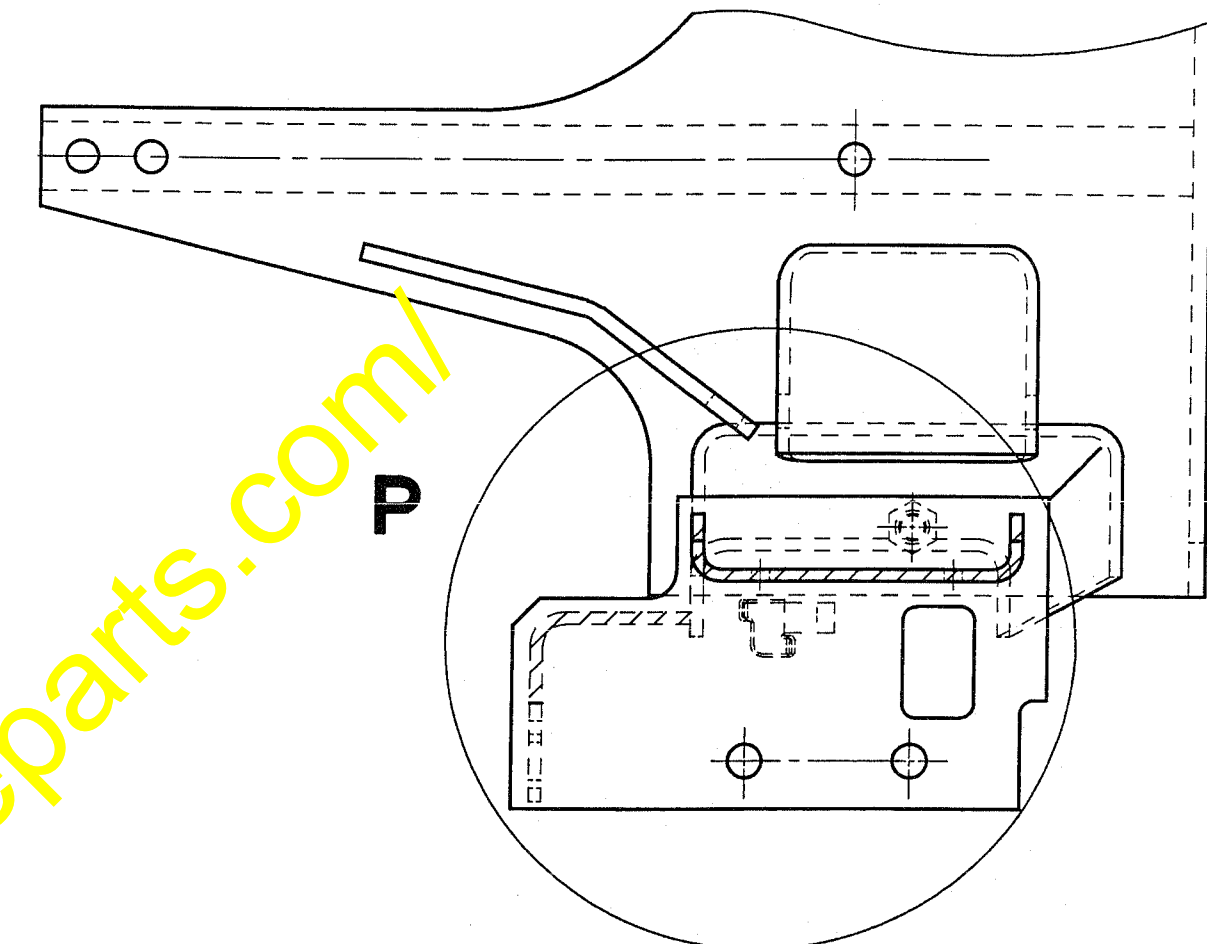
6. Reworking procedure

1) Reworking of the AJSS base bracket (1/2)

Cut off the hatched sections shown in Fig. 4 from the AJSS base bracket.



P

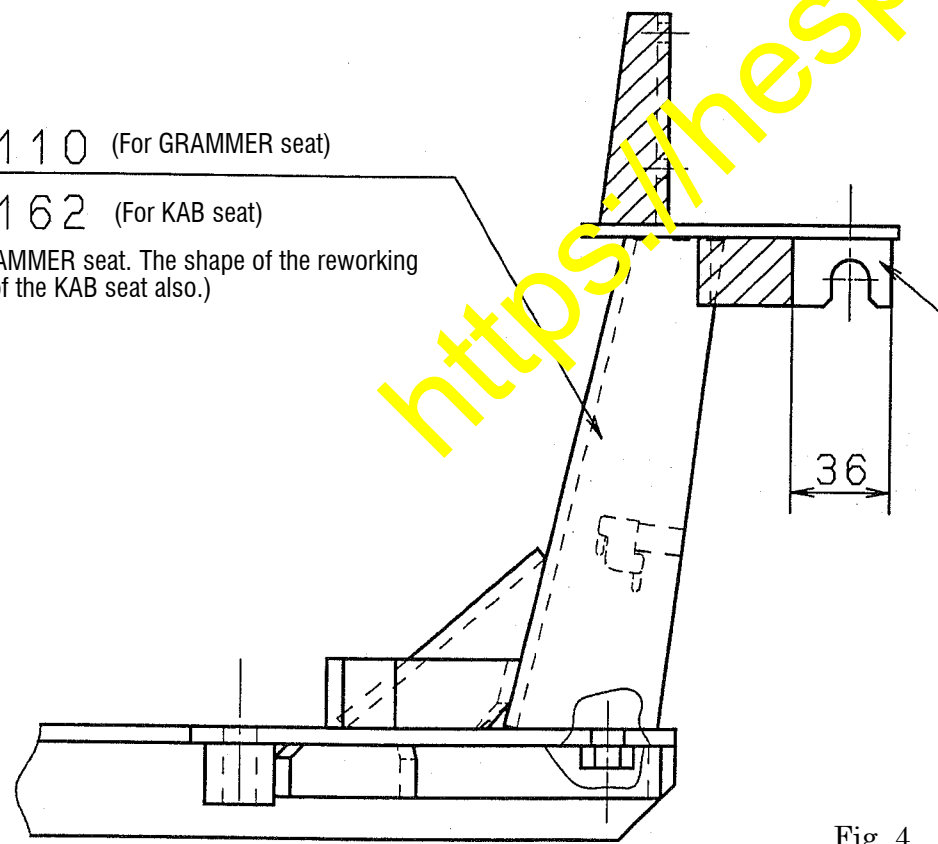


P

428-40-22110 (For GRAMMER seat)

42C-40-12162 (For KAB seat)

(This drawing is shown the GRAMMER seat. The shape of the reworking sections are the same in case of the KAB seat also.)



Leave this section.

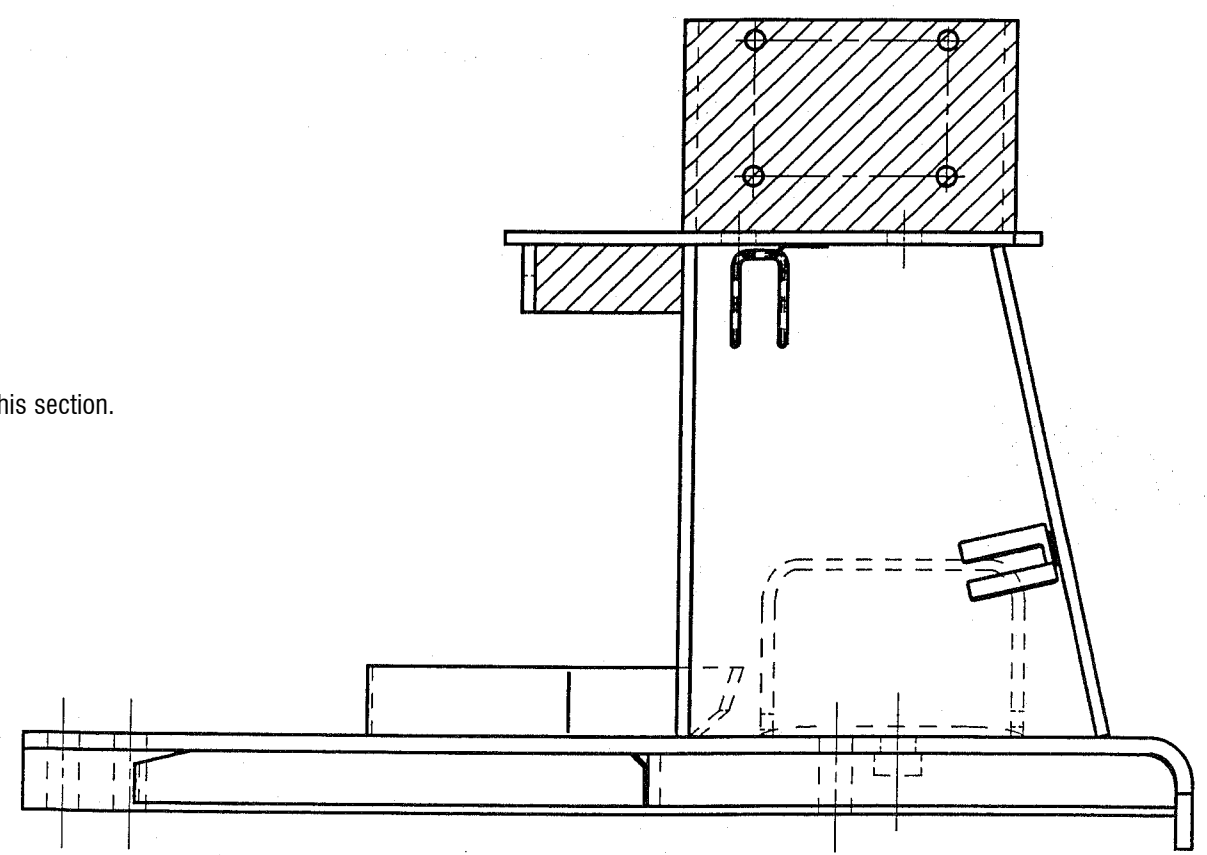


Fig. 4

1) Reworking of the AJSS base bracket (2/2)

- (1) Weld the prepared parts to the bracket which has been reworked as per page 6 referring to the drawing in Fig. 5.
- (2) After finishing the reworking, apply touch painting (Permanent Gray).

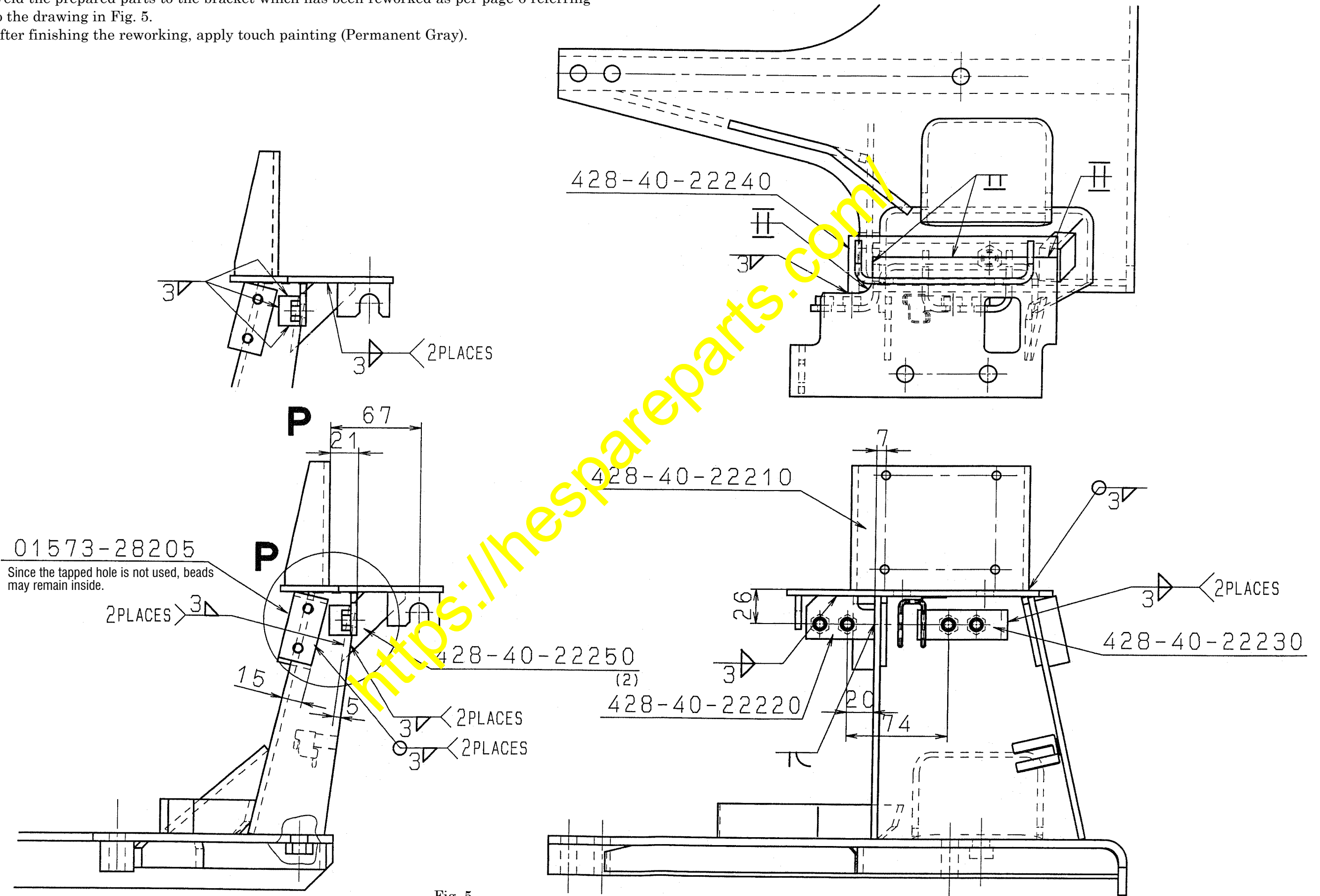


Fig. 5

- 2) Reworking of the AJSS slide bracket
Add a $\phi 9$ hole to the arm rest base (42C-40-12161) at the position shown in Fig. 6.

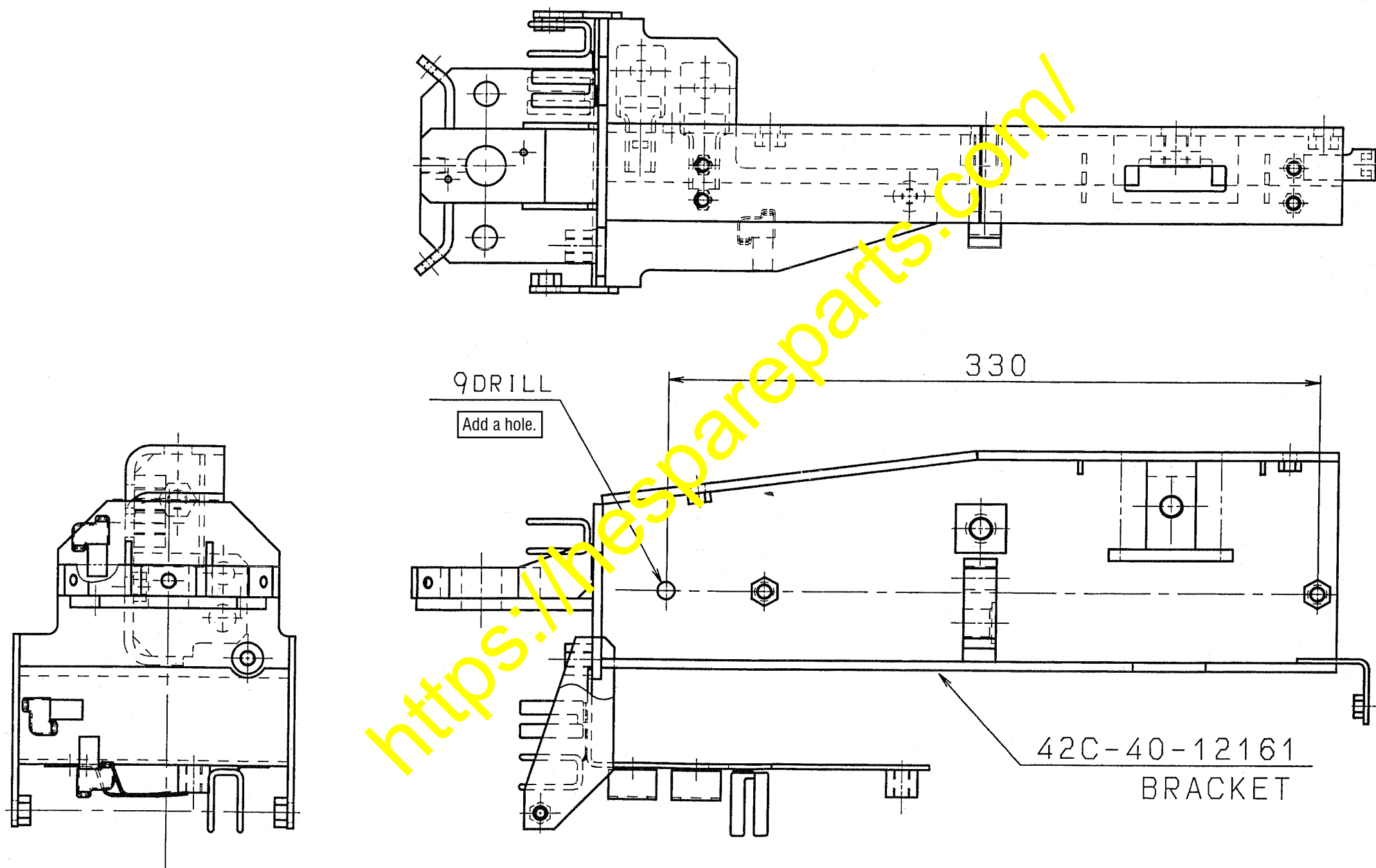
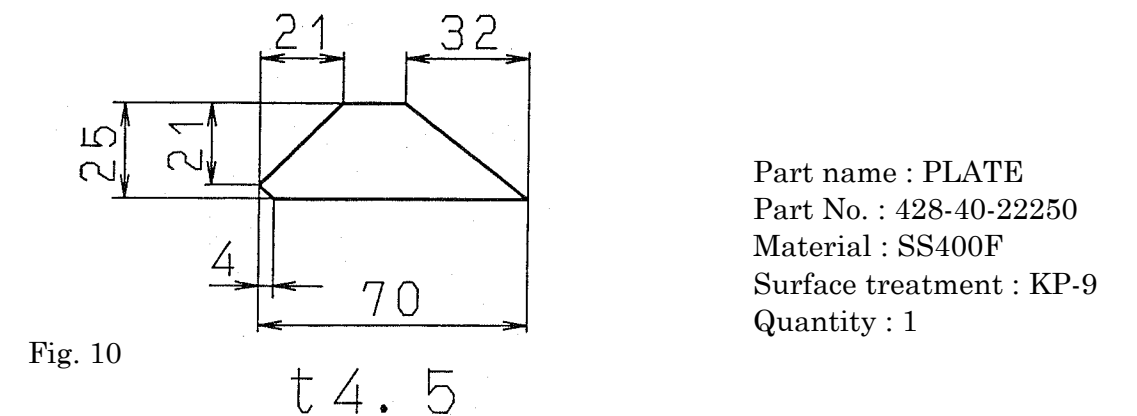
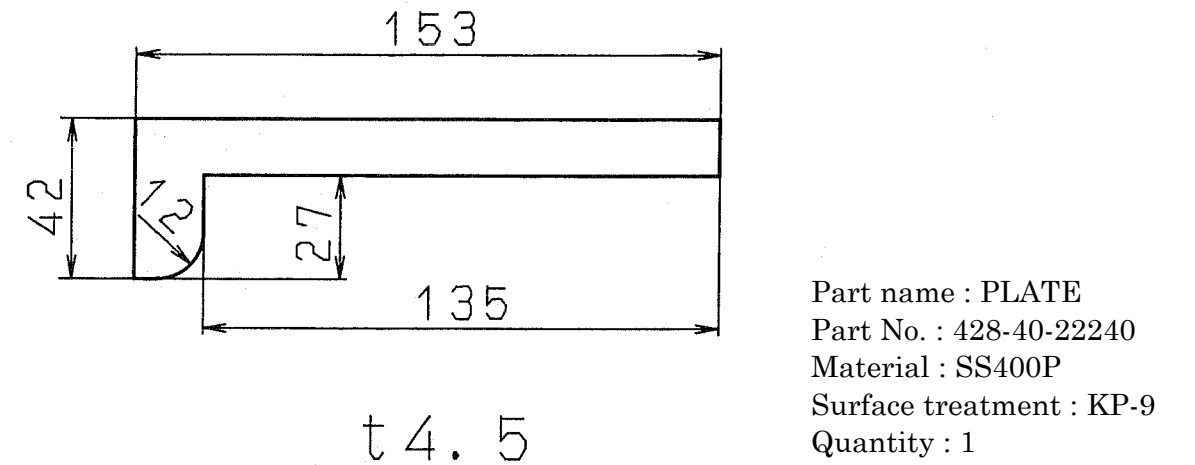
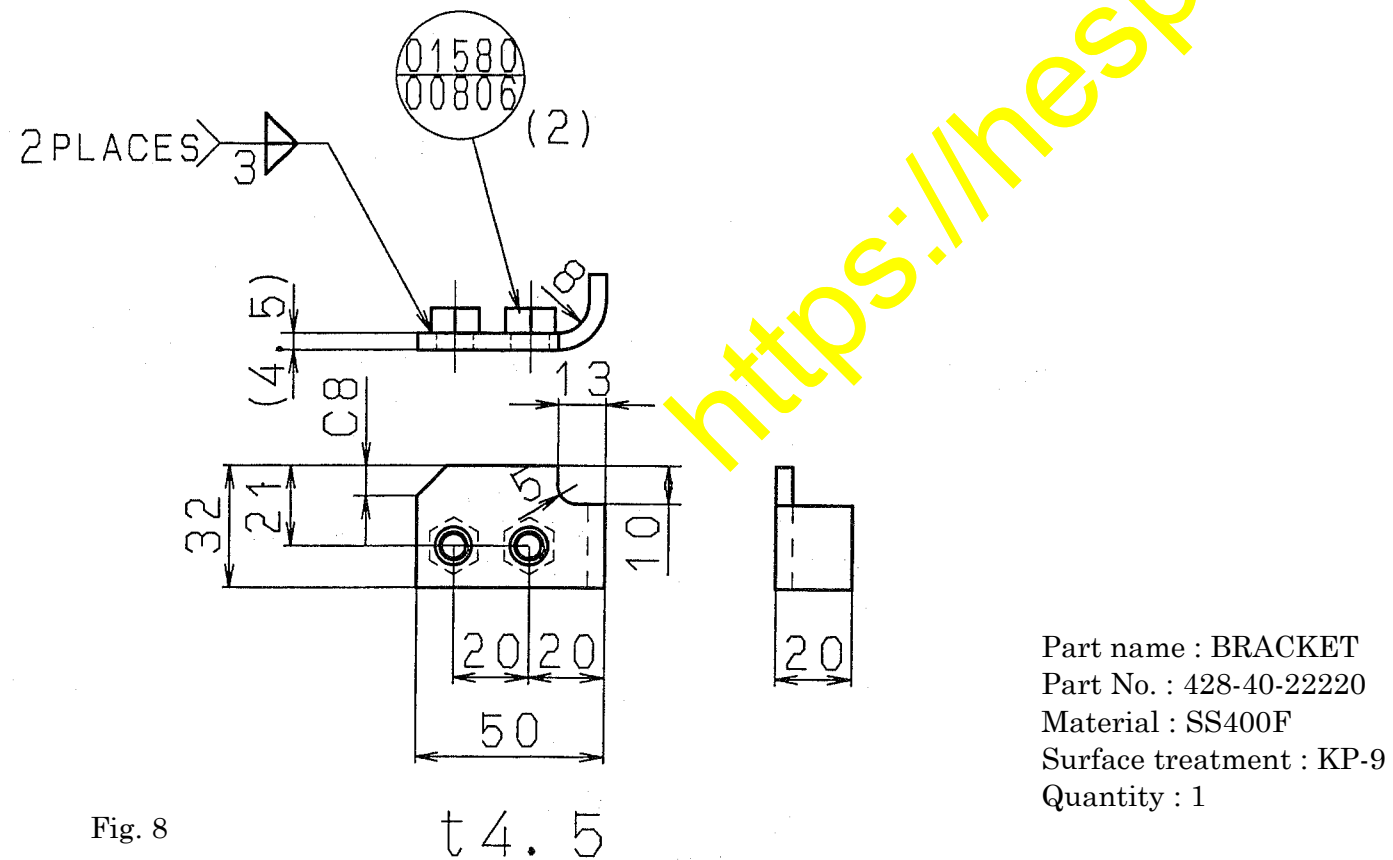
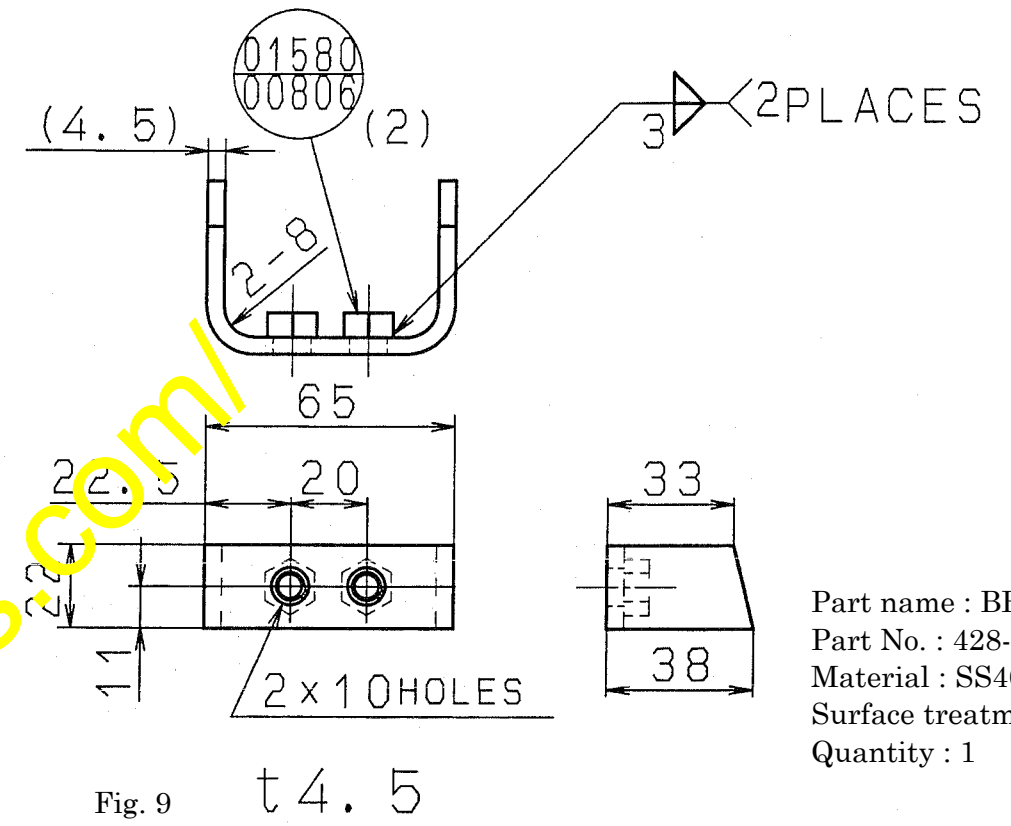
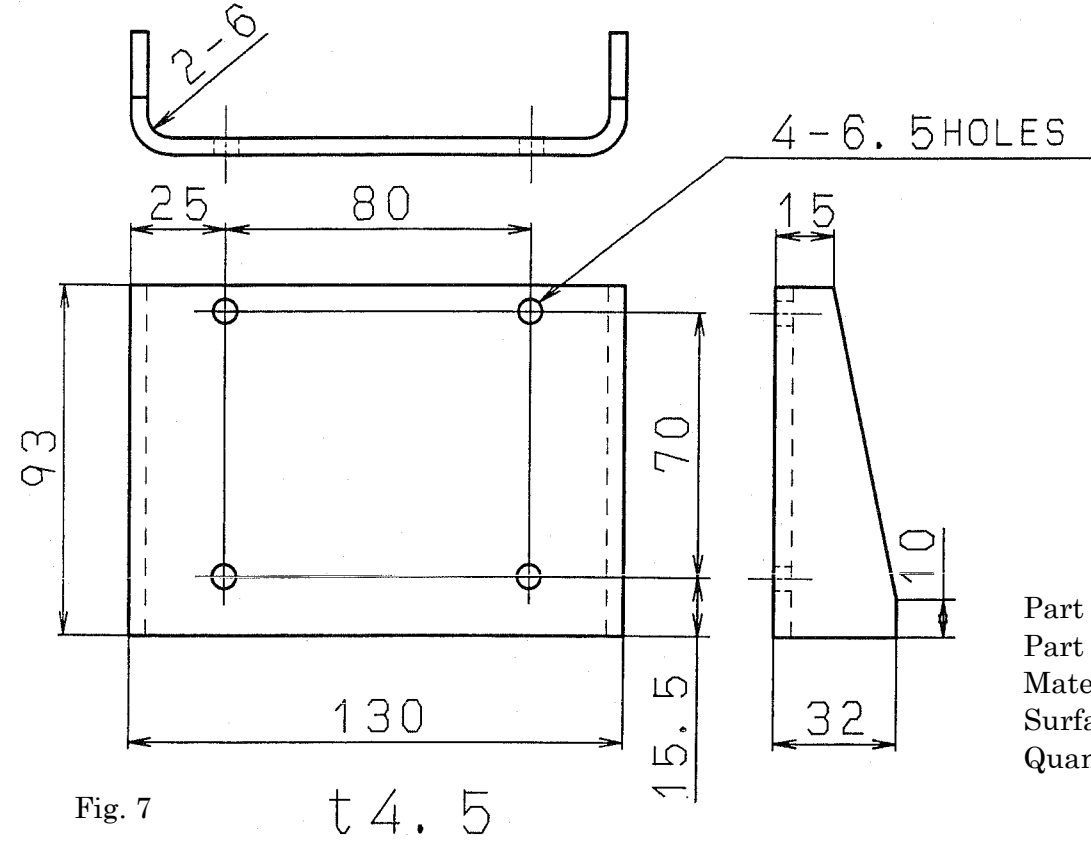


Fig. 6

7. Table of parts necessary for reworking (When preparing these parts necessary for reworking locally, refer to these drawings.)



8. Installation procedure of the parts to repair the backlash of the AJSS arm rest on the WA700-3 thru WA1200-3 machines
 Install the parts as per the drawings in Fig. 11 and Fig. 12.

