

PARTS & SERVICE NEWS

REF NO.	AT04072
DATE	Jun. 17, 2004

(C)

Page 1 of 11

SUBJECT: INSTALLATION PROCEDURES FOR MODIFIED PARTS FOR INCREASING CLEARANCE FOR LARGE SIZE TIRES ON WA480-5

PURPOSE: To introduce installation procedures for modified parts for increasing clearance for large size tires on WA480-5

APPLICATION: WA480-5 Wheel Loaders, Serial Nos. 80001 and up

FAILURE CODE: 5431MV

DESCRIPTION:

1. Introduction

Insufficient clearance between a tire chain and a tire on a vehicle with large diameter tires (26.5-25 tires) may cause interference between the chain and a fender or ladder when the vehicle is running depending on the condition of the chain attached.

This Service News introduces the procedures for installing the modified parts (fenders, ladders, etc.) that were redesigned to increase the clearance between the chain and the tire.

2. List of parts

No.	Part No.	Part Name	Q'ty	Remarks
1	421-54-35130 (421-54-34292)	Fender L.H. (Fender L.H.)	1 (1)	
	421-54-35140 (421-54-34372)	Fender R.H. (Fender R.H.)	1 (1)	
2	421-54-35150 (421-54-34171)	Sheet (Sheet)	2 (2)	
3	421-54-35160 (421-54-34180)	Plate L.H. (Plate L.H.)	1 (1)	
	421-54-35170 (421-54-34180)	Plate R.H. (Plate R.H.)	1 (1)	
4	01010-D1035 (01010-D1025)	Bolt (Bolt)	6 (6)	
5	01643-71032 (01643-71032)	Washer (Washer)	6 (6)	
6	01010-D1020	Bolt	4	
7	421-54-34550	Washer	4	
8	421-54-35180	Plate	2	
9	421-54-34840 (421-54-34641)	Plate (Plate)	1 (1)	

No.	Part No.	Part Name	Q'ty	Remarks
10	421-54-34890 (421-54-34162)	Ladder (Ladder)	1 (1)	
11	01010-81230 (01010-81235)	Bolt (Bolt)	2 (2)	
12	421-54-34830 (421-54-34791)	Ladder (Ladder)	1 (1)	
13	421-54-34820 (421-54-34620)	Plate (Plate)	1 (1)	
14	421-54-34930	Sheet	1	
15	421-54-34810 (421-54-34312)	Plate (Plate)	1 (1)	
16	421-54-35190 (421-54-35312)	Hand rail L.H. (Hand rail L.H.)	1 (1)	
Parts for full fenders				
17	421-54-34870 (421-54-34650)	Plate L.H. (Plate L.H.)	1 (1)	
	421-54-34880 (421-54-34670)	Plate R.H. (Plate R.H.)	1 (1)	

3. Improvements

3-1. Improvements

- (1) Replacing the front fenders
- (2) Replacing the left and right fenders

3-2 Removing parts ----- Page 4 thru 7

- (1) Removing the left and right side front fenders
- (2) Removing the left handrail and mudguard sheets for the ladder and rear fender
- (3) Removing the right handrail and ladder
- (4) Removing the mudguard sheet for the rear full fender (only for the vehicle with the rear full fender attached)

3-3 Modified parts

There are no parts that require reworking.
Assemble the modified parts provided.

3-4 Installation of the modified parts ----- Page 8 thru 11

- (1) Assembling the right handrail and ladder
- (2) Assembling the left handrail and mudguard sheets for the ladder and rear fender
- (3) Assembling the left and right side front fenders
- (4) Assembling the mudguard sheet for the rear full fender (only for the vehicle with rear full fender attached)

<https://hespareparts.com/>

3-2 Removing parts

(1) Removing the left and right side front fenders

- The parts that must be removed are shown in Fig. 1.
The mass of those parts removed is 22 kg for either side.
- Those parts marked with asterisk (*) must be disposed of after the disassembling.
- Those parts marked with ® will be reused in reassembling.

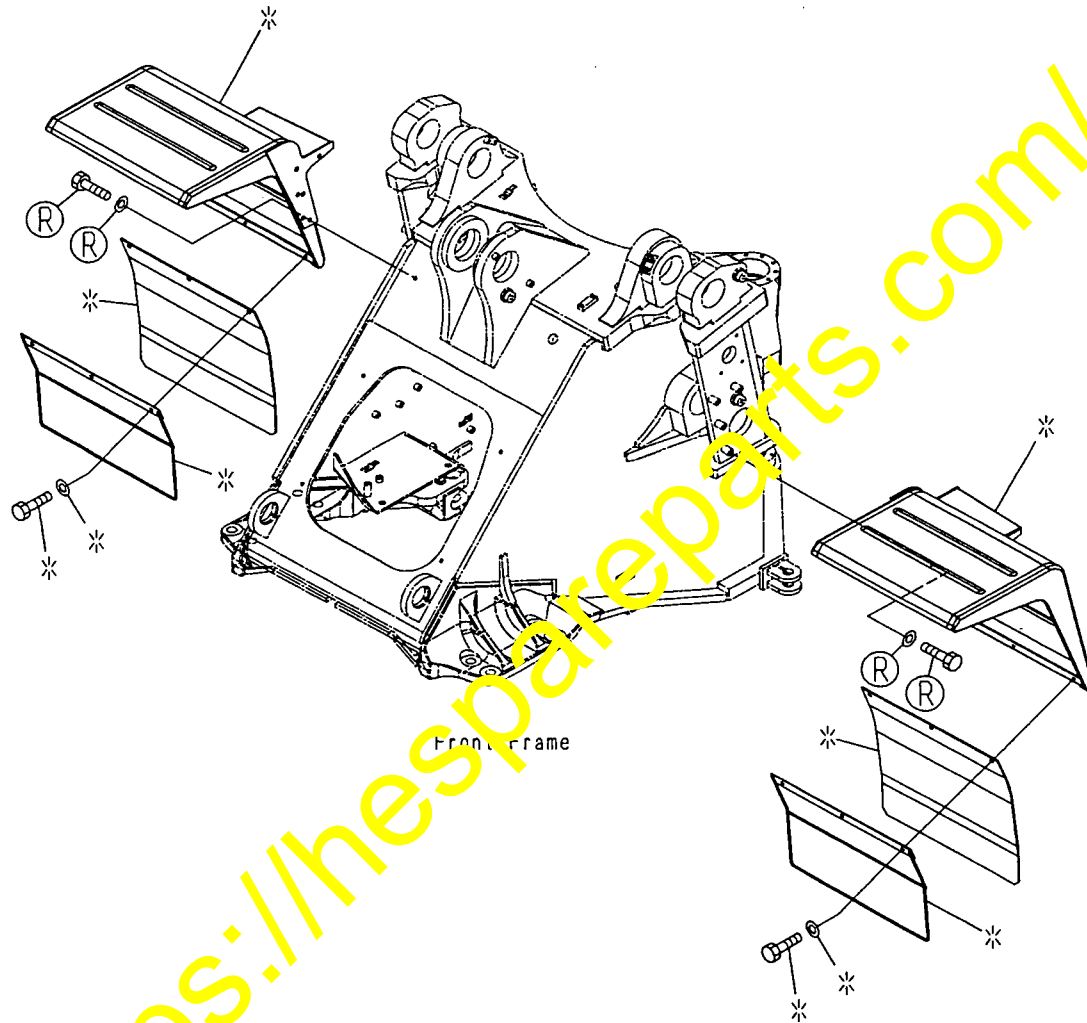


Fig. 1

- (2) Removing the left handrail and mudguard sheets for the ladder and rear fender
- The parts that must be removed are shown in Figs. 2 and 3.
The mass of those ladder parts removed is 25 kg.
 - Those parts marked with asterisk (*) must be disposed of after the disassembling.
 - Those parts marked with (R) will be reused in reassembling.

Handrail

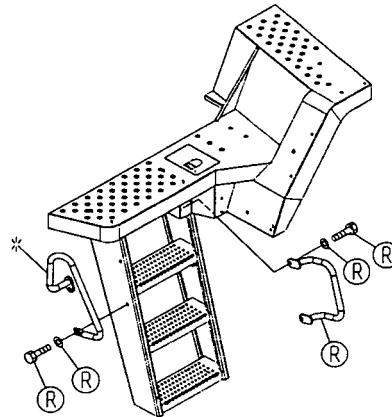


Fig. 2

Mudguard sheets for ladder and rear fender

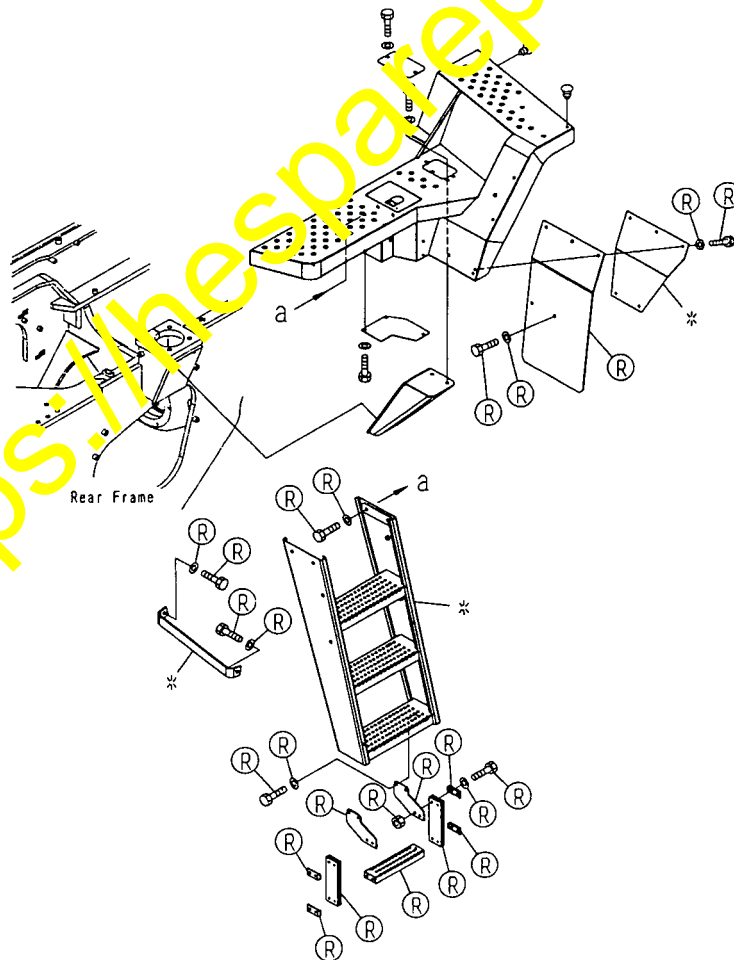


Fig. 3

(3) Removing the right handrail and ladder

- The parts that must be removed are shown in Figs. 4 and 5.
The mass of those parts removed is 24 kg.
- Those parts marked with asterisk (*) must be disposed of after the disassembling.
- Those parts marked with (R) will be reused in reassembling.

Handrail

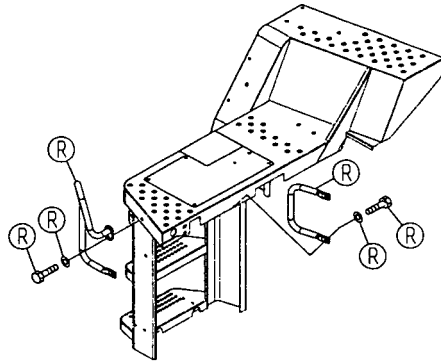


Fig. 4

Ladder

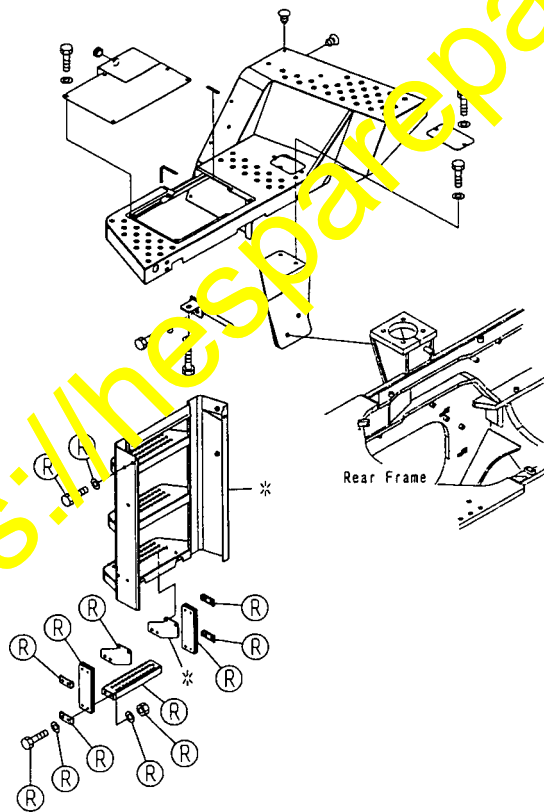


Fig. 5

- (4) Removing the mudguard sheet for the rear full fender (only for the vehicle with the rear full fender attached)
- The parts that must be removed are shown in Fig. 6.
 - Those parts marked with asterisk (*) must be disposed of after the disassembling.
 - Those parts marked with (R) will be reused in reassembling.

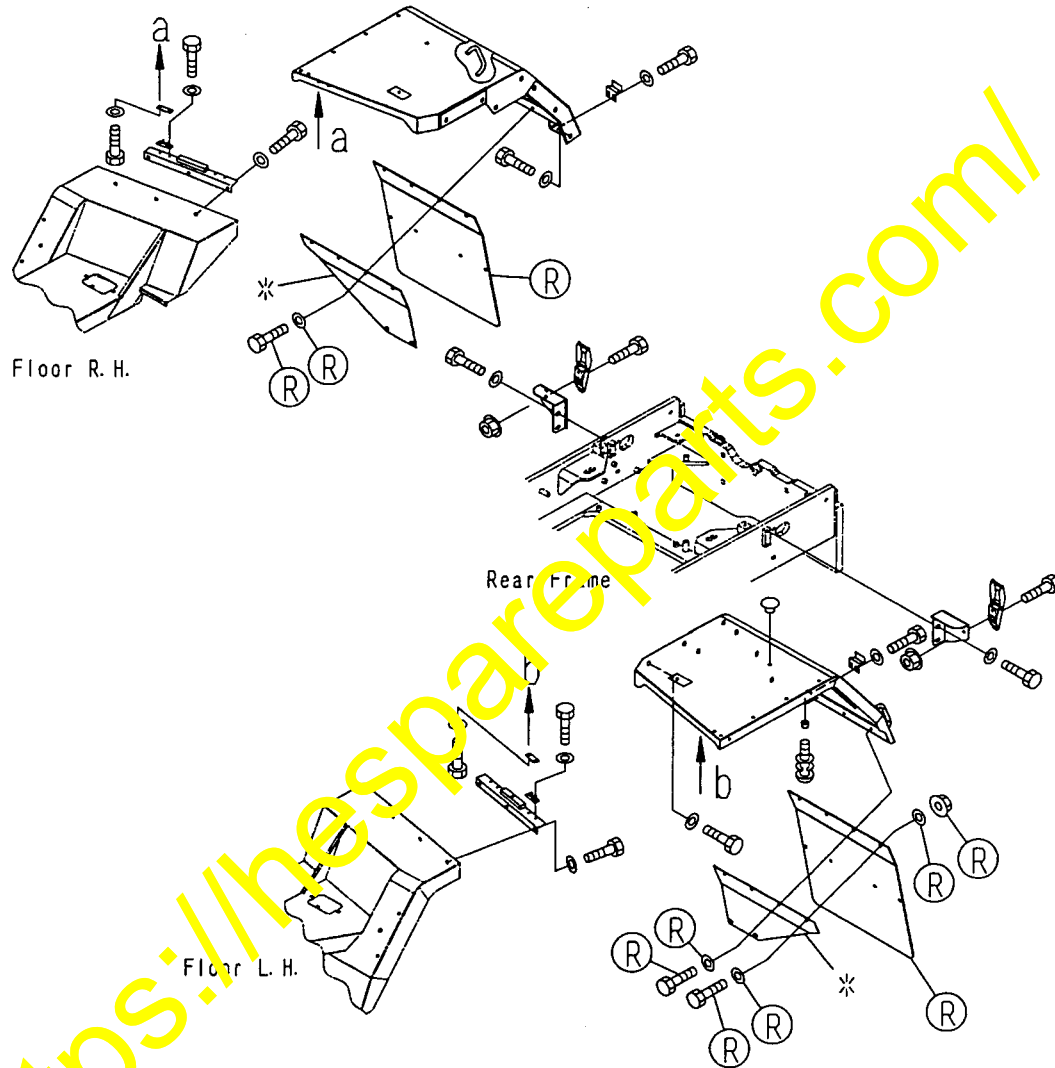


Fig. 6

3-4 Installation of the modified parts

Reassemble the parts in the reverse order of disassembly as shown below.
Refer to WA480-5 Shop Manual for the tightening torques for the bolts.

Note: The index numbers in the figures correspond to those numbers in the list of parts on Page 2.

All parts marked with (R) are those reused.

(1) Assembling the right handrail and ladder

- (a) Attach sheet, No. 14 (421-54-34930) to the ladder as shown in Fig. 7 using adhesive LT-1B.

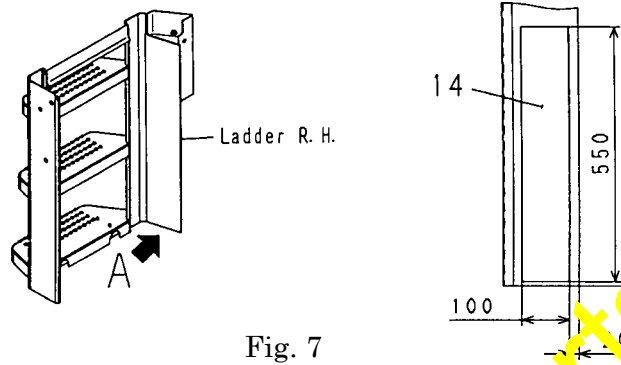


Fig. 7

- (b) Install the ladder and handrail.

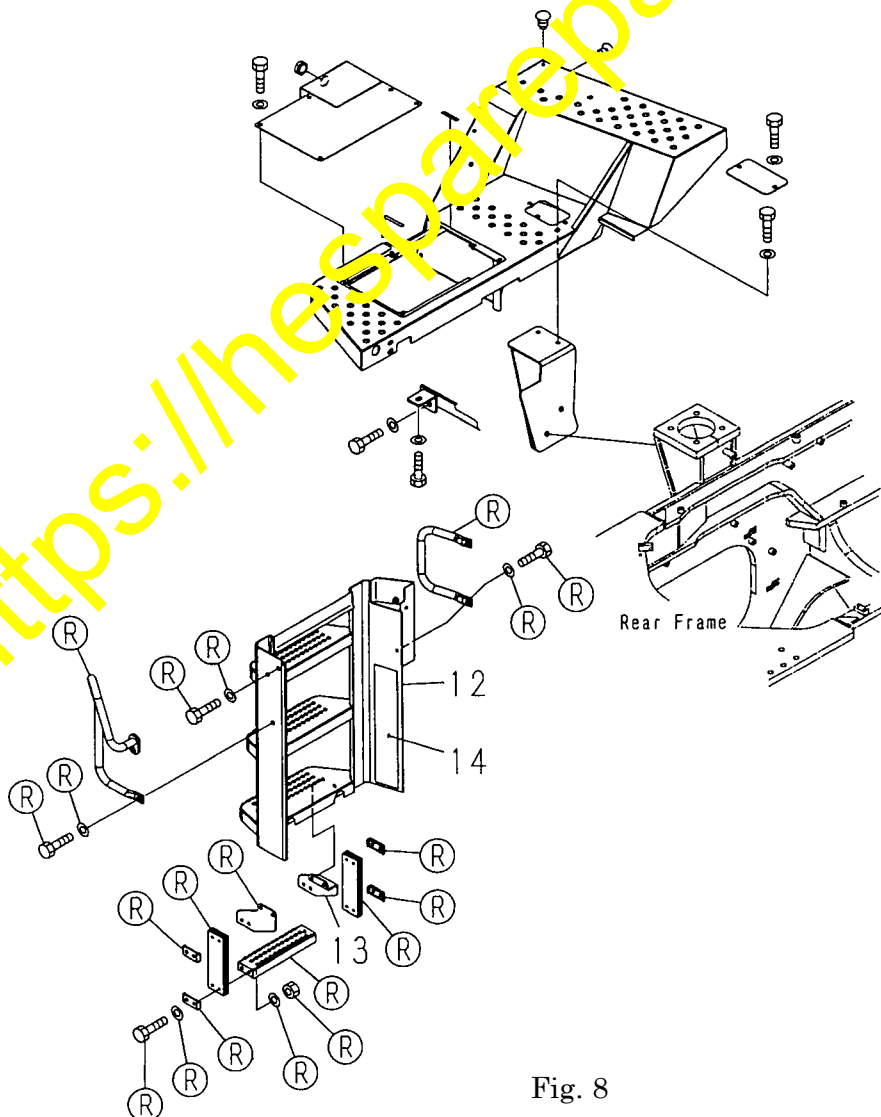


Fig. 8

(2) Assembling the left handrail and mudguard sheets for the ladder and rear fender

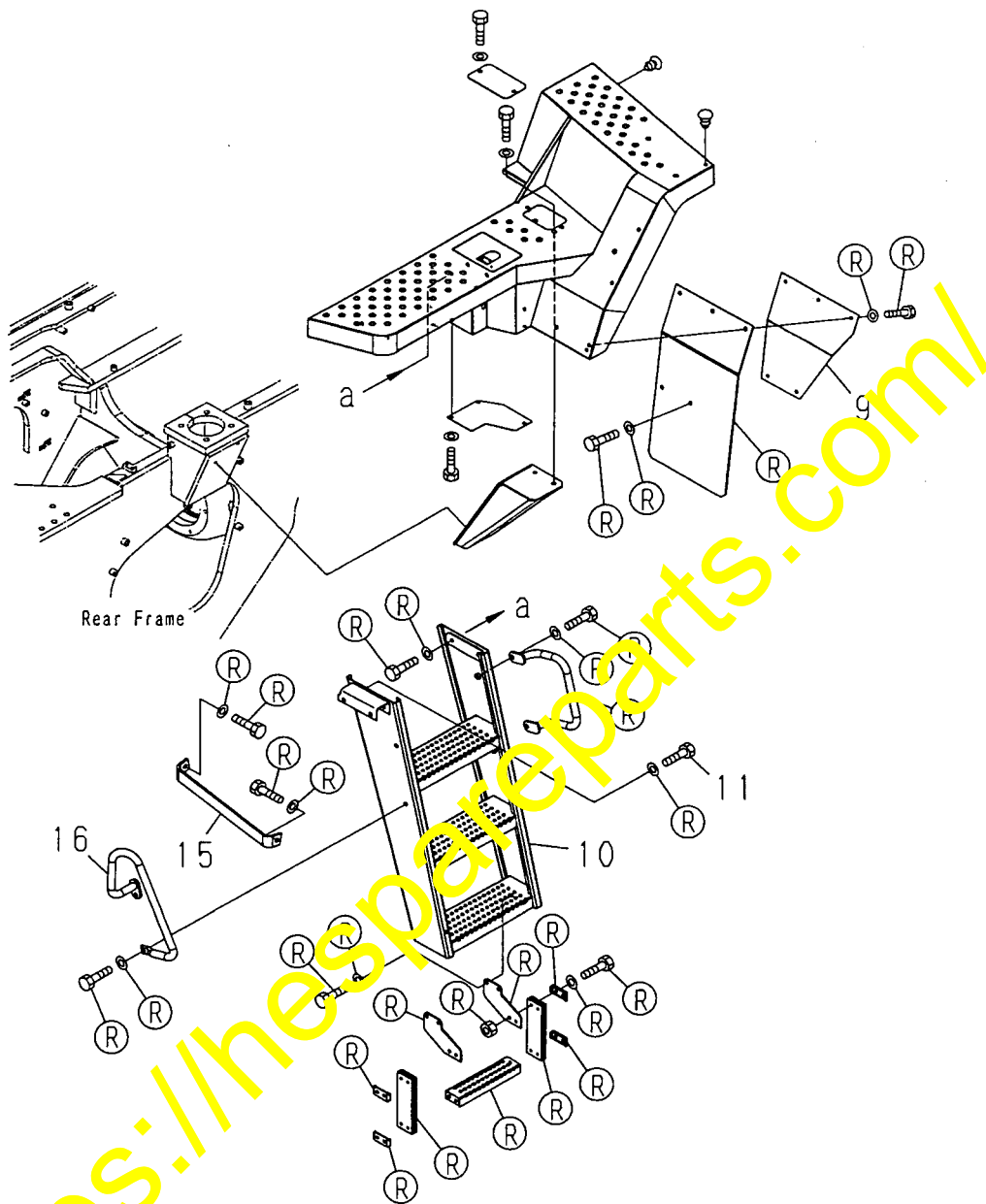


Fig. 9

Note: For the four mounting bolts for the left hand ladder, use 01010-81230 (the new parts for this modification) for the two (11) at the front and reuse 01010-81235 for those two at the rear.

- (3) Referring to Fig. 10, reassemble the mudguard sheet for the front fender and the mudguard support plate.

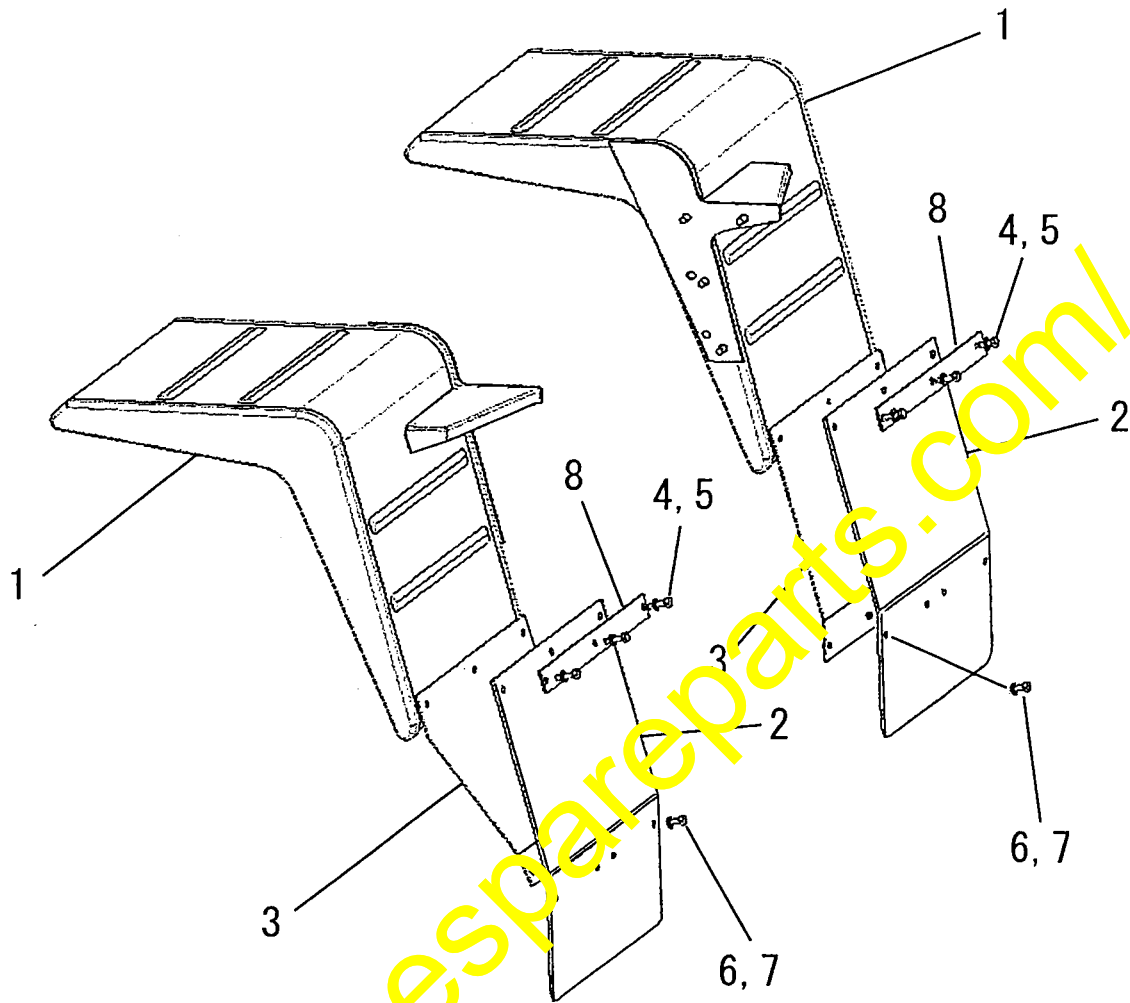


Fig. 10

- (4) Assembling the mudguard sheet for the rear full fender (only for the vehicle with the rear full fender attached)

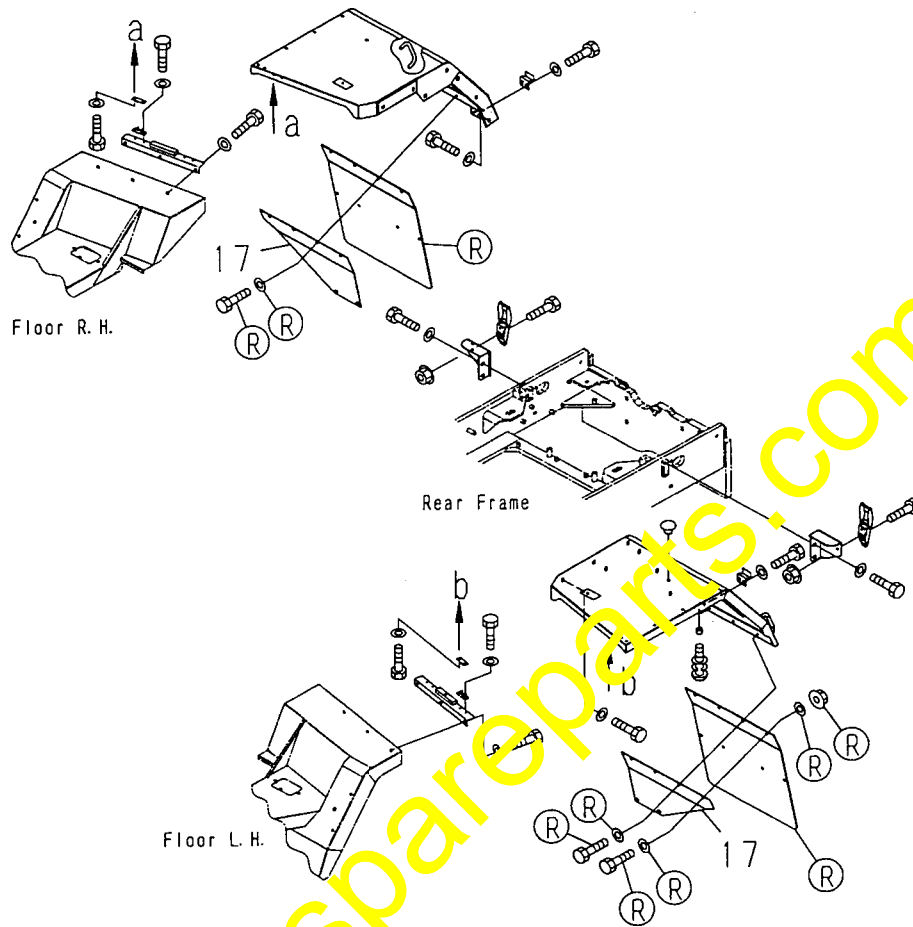


Fig. 11