

PARTS & SERVICE NEWS

REF NO.	AT96072
DATE	Jun. 6, 1996

Page 1 of 4

SUBJECT: OIL LEAKAGE FROM SPRING CASE OF STEERING VALVE ON WA700-1

PURPOSE: To introduce repair procedures to prevent oil leakage which may possible occur from the spring case of the steering valve of WA700-1 wheel loaders.

APPLICATION: Refer to page 4

DESCRIPTION:

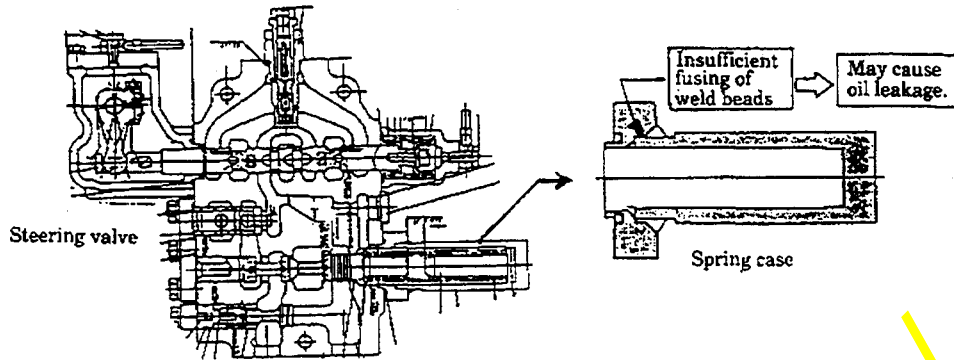
1. Introduction

With WA700-1 wheel loaders, oil leakage may occur owing to defective welding of the spring case of the steering valve and it therefore has become necessary to repair following the repair procedures outlined in this Service News.

2. List of parts

Part No.	Part Name	Q'ty	Purpose of parts	Remarks
702-23-32181	Case	1	Replacement	
07000-13050	O-Ring	1		
702-23-03202	Valve Ass'y	1	Reworked	

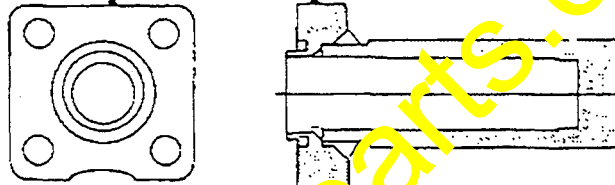
3. Trouble content



4. Contents of the repair

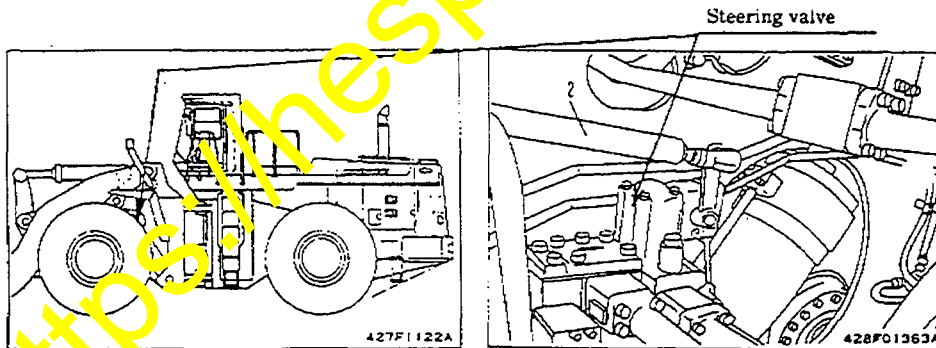
Replace the spring case of the steering valve with the improved one.

Marking for identification of the improved part: 00 - 0 - 1

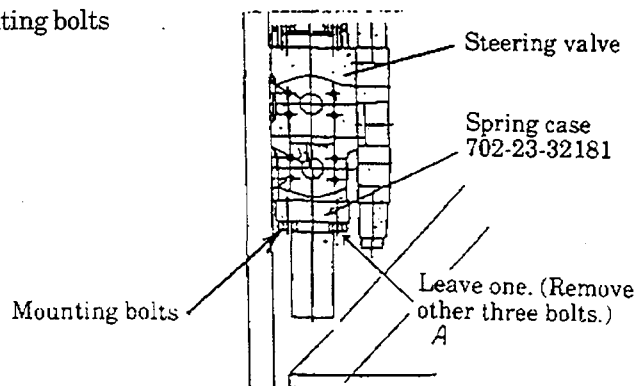


5. Replacing the spring case

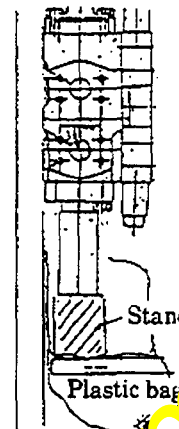
- ⚠ Park the vehicle on a level surface, install the safety bar to the frame, land the bucket, stop the engine, pull up the parking brake and block the tires.
- ⚠ Loosen the oil filler port cap to release the internal residue pressure from the hydraulic oil tank before turning the steering wheel and operating respective control levers of the work equipment two to three times to release residual pressure from inside the piping.



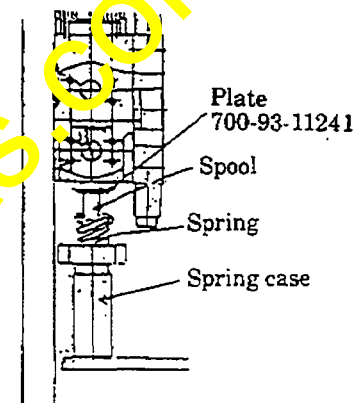
- (1) Remove three out of the four mounting bolts of the spring case.



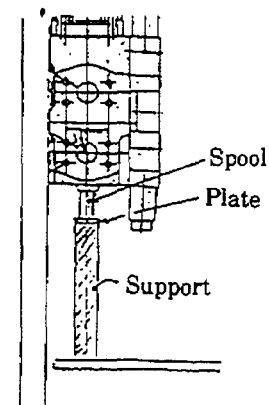
- (2) Place a suitable stand underneath the spring case before removing the remaining bolt.
 (Spread a plastic bag or the sort below the stand since oil leaks out when the sprig case is detached.)



- (3) Hold the spring case and take the stand away.
 (Installed load of spring : 13 kg)
 Lower the spring case gently to remove the case together with its spring.



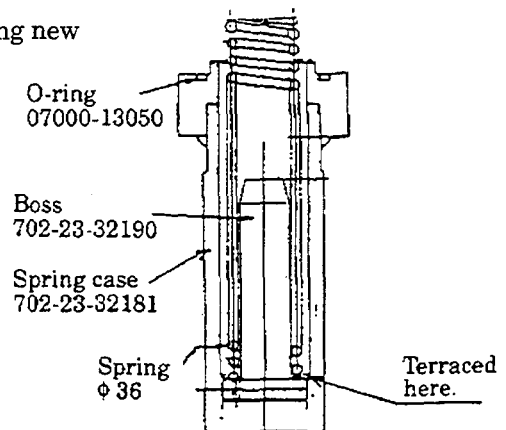
- (4) Insert a suitable support to hold the spool and plate from dropping off.



- (5) Take out the spring and the boss from inside the removed spring case.

Insert the spring, boss and O-ring into the replacing new spring case according to the sketch given at right.


⚠ Make sure the boss is being inserted all the way to the end.



- (6) Set the spring case to its position, holding the spool and the plate up, before placing the stand.

⚠ Make sure the recess of the spring case is being directed properly.

- (7) Screw in two bolts in diagonal positions.
Screw in remaining two bolts before tightening all the bolts in diagonal order.

 Tightening torque : 10 kgm



6. List of applicable vehicles

No.	Serial No.	Point	Delivered	Remarks
1	10110	U.S.A.		
2	10111	U.S.A.	960212	
3	10114	U.S.A.		
4	15000	U.S.A.		