

PARTS & SERVICE NEWS

REF NO.	AT97098
DATE	May 27, 1997

Page 1 of 3

SUBJECT: IMPROVED SUPPORT ROD BROKEN OF POWERTILT ON GD825A-2

PURPOSE: To introduce repair procedures when the power tilt support rod gets broken on the GD825A-2 motor graders.

APPLICATION: GD825A-2 Motor Graders, Serial Nos. 11001 thru 12012

DESCRIPTION:

1. Introduction

When the power tilt support rod gets broken on the GD825A-2 motor graders, repair the failure referring to this Service News.

2. List of parts

Part No.	Part Name	Purpose of part	Qty	Remarks
235-70-13242 (235-70-13241)	Rod (Rod)	Replacement	1 (1)	Part being replaced for the convenience of the repair work
04050-18090 (04050-18090)	Pin (Pin)		1 (1)	

3. Outline of the modification

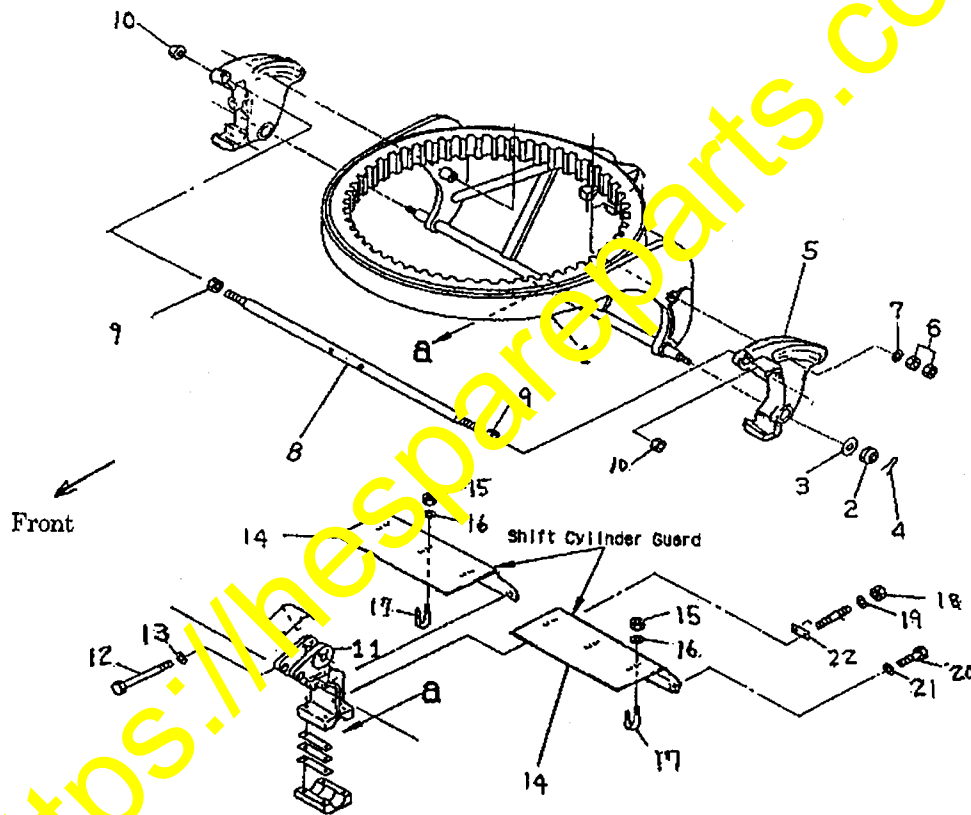
The material of the support rod has been changed to increase its strength.

New rod	Current rod
S43C	← SS400B
(Coarse state part)	

4. Modification procedures

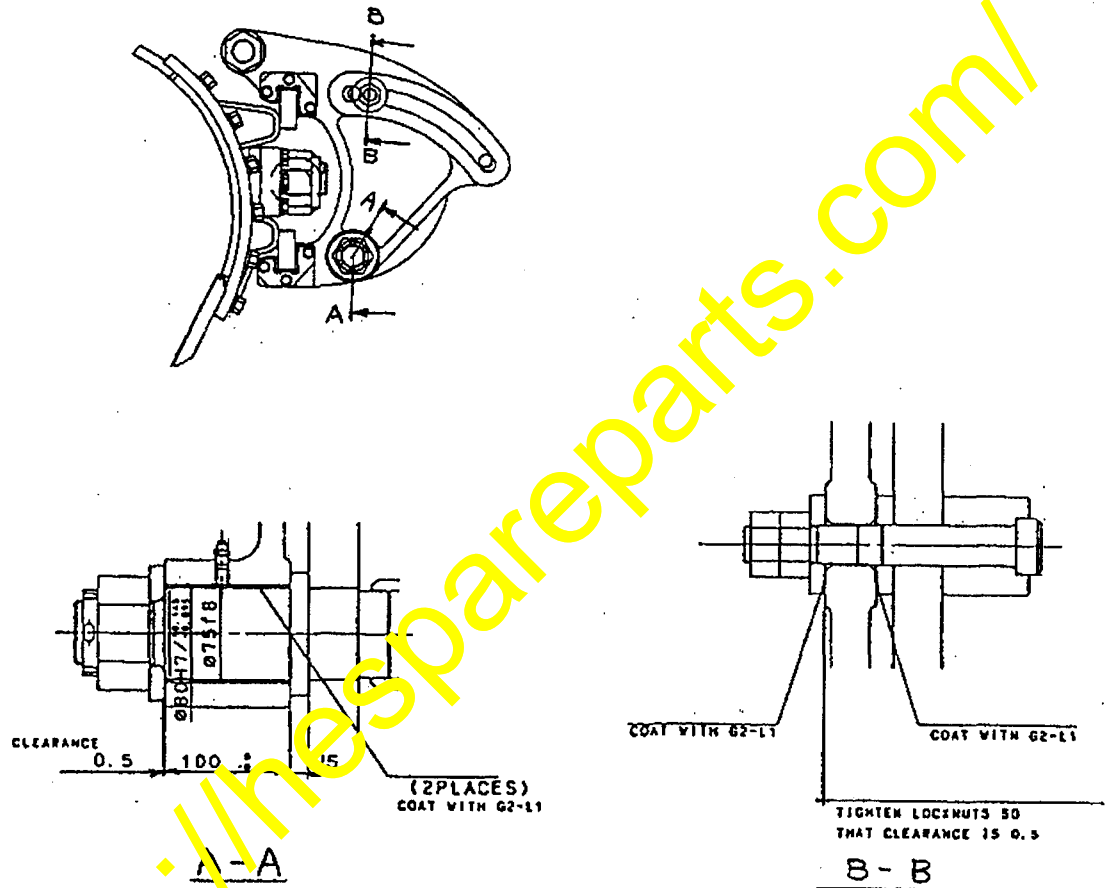
(1) Remove the rod.

- ① Loosen the bolt, nut, etc. (parts coded 15 through 22) locking the shift cylinder guard (14) to remove the shift cylinder guard (14).



- ② Remove the bolt (12) and washer (13) fastening the rod (8) to the power tilt cylinder bracket (11).
- ③ Loosen to remove the nuts (10) at both ends of the rod (8). Screw-in the nuts (9) as far as they go inward to the end of respective threadings.

- ④ Remove the mounting nut (2), pin (4), washer (3), double-nuts (6) and washer (7) of one of the adjusters (5).
 - ⑤ Moving the adjuster toward outside, push the rod (8) toward the opposite direction from the moving direction of the adjuster to pull it out from the adjuster.
- (2) Reinstall the support rod.
- ① Reverse the above removal procedures when reinstalling the support rod.
 - ② Adjust the adjuster.



<https://hespareparts.com/>