

PARTS & SERVICE NEWS

REF NO.	AT99220A
DATE	Apr. 27, 2000

Page 1 of 18

This PARTS & SERVICE NEWS supersedes the previous issue No. AT99220 dated Feb. 14, 2000 which should be discarded.

SUBJECT: REPAIR OF CRACK ON CAB FRONT GLASS ON WA120-3--WA470-3

PURPOSE: To introduce modification procedures to eliminate cracks occurring in the front windshield glass of the cab on WA120-3 thru WA470-3 wheel loaders (for overseas markets)

APPLICATION: Refer to Page 18.

FAILURE CODE: 553337

DESCRIPTION:

1-1. Introduction

With the front windshield glass of the cab on the WA120-3 thru WA470-3 wheel loaders, cracks may spread out from the sections near the working lamps on the upper L.H and R.H sides of the windshield glass because of heat generated by the working lamps.

When this type of cracking is found, make the modification to move the working lamps to the outside positions following the procedures outlined in this Service News.

1-2. Revised places:

12 places Δ	Apr. 27, 2000	Parts to be ordered for the modification were changed owing to occurrence of interference.
--------------------	---------------	--

2. List of parts

(1) Introduction of the part number changes of the cab assemblies

Part No.	Part Name	Purpose of part	Q'ty	Remarks
416-926-2301 (416-926-2300)	ROPS cab A. (ROPS cab A.)	} Reworked	1 (1)	} WA120-3 WA180-3
416-926-2401 (416-926-2400)	ROPS cab A. (ROPS cab A.)		1 (1)	
416-926-2501 (416-926-2500)	ROPS cab A. (ROPS cab A.)		1 (1)	
416-56-21061 (416-56-21060)	Cab A. (Cab A.)		1 (1)	
416-56-21071 (416-56-21070)	Cab A. (Cab A.)		1 (1)	
416-56-21081 (416-56-21080)	Cab A. (Cab A.)		1 (1)	

Part No.	Part Name	Purpose of part	Q'ty	Remarks
417-926-2301 (417-926-2300)	ROPS cab A. (ROPS cab A.)	} Reworked	1 (1)	WA120-3, WA180-3 WA180PT-3
417-56-21911 (417-56-21910)	Cab A. (Cab A.)		1 (1)	WA180-3
418-926-2211 (418-926-2210)	ROPS cab A. (ROPS cab A.)		1 (1)	WA250-3, WA250L-3 WA250PT-3
418-926-2221 (418-926-2220)	ROPS cab A. (ROPS cab A.)		1 (1)	} WA250-3
418-926-2231 (418-926-2230)	ROPS cab A. (ROPS cab A.)		1 (1)	
418-56-21071 (418-56-21070)	Cab A. (Cab A.)		1 (1)	
418-56-21081 (418-56-21080)	Cab A. (Cab A.)		1 (1)	} WA320-3
418-56-21091 (418-56-21090)	Cab A. (Cab A.)		1 (1)	
419-925-2111 (419-925-2110)	ROPS cab A. (ROPS cab A.)		1 (1)	
419-925-2121 (419-925-2120)	ROPS cab A. (ROPS cab A.)		1 (1)	} WA320-3, WA380-3, WA420-3, WA470-3, WD420-3
424-56-21021 (424-56-21020)	Cab A. (Cab A.)		1 (1)	
419-925-2071 (419-925-2070)	ROPS cab A. (ROPS cab A.)		1 (1)	WA300L-3
424-56-21031 (424-56-21030)	Cab A. (Cab A.)		1 (1)	} WA320-3, WA380-3, WA420-3, WA470-3, WD420-3
423-926-2501 (423-926-2500)	ROPS cab A. (ROPS cab A.)		1 (1)	
423-926-2601 (423-926-2600)	ROPS cab A. (ROPS cab A.)		1 (1)	} WA300L-3
419-925-2061 (419-925-2060)	ROPS cab A. (ROPS cab A.)		1 (1)	
41K-926-2501 (41K-926-2500)	ROPS cab A. (ROPS cab A.)		1 (1)	WF450-3 WF450T-3
41K-926-2101 (41K-926-2100)	ROPS cab A. (ROPS cab A.)		1 (1)	WF450T-3

(2) Parts necessary for this modification

Part No.	Part Name	Purpose of part	Q'ty	Remarks
425-56-21110	Bracket L.H	}	1	
425-56-21120	Bracket R.H		1	
425-56-21130	Wiring harness		2	
\triangle 425-56-21140 ¹ (425-56-21140)	Plate L.H (Plate L.H)		1 (1)	※
\triangle 425-56-21150 ¹ (425-56-21150)	Plate R.H (Plate R.H)		1 (1)	※
423-975-1140	Cap		2	
421-54-15520	Clip		2	※
07283-32746	Clip		2	
07283-52737	Seat		2	
\triangle 01580-11008 ²	Nut		8	
01643-31032	Washer		4	
08053-01510	Clip		2	
01435-01020	Bolt		2	
\triangle 421-926-2960 ¹ (421-926-2960)	Cover Cover		2 (2)	☆

Parts marked ※ are not necessary for machines with the serial numbers of #54001 and after of the WA320-3, WA380-3, WA420-3, WA470-3, WD420-3, WF450-3 and WF450T-3.

Parts marked ☆ are necessary only for machines with the serial numbers of #54001 and after of the WA320-3, WA380-3, WA420-3, WA470-3, WD420-3, WF450-3 and WF450T-3.


Part No.	Part Name	Purpose of part	Q'ty	Remarks
22T-54-11650	Finisher	Addition	2	☆
421-926-2860	Glass	}	1	※, ◆, Curved glass
421-926-2910	W/Strip		1	
423-56-21150	W/Strip		1	※
423-56-21160	W/Strip		1	※
424-926-2670	Glass		1	☆, Flat glass
23S-55-51840	Rubber		1	☆
421-56-21950	Sealant	}	1	☆
421-56-21960	Primer		1	☆
423-56-21110	Glass	Replacement	1	※ ◇, Curved glass

Parts marked ※ are not necessary for machines with the serial numbers of #54001 and after of the WA320-3, WA380-3, WA420-3 and WA470-3.

Parts marked ☆ are necessary only for machines with the serial numbers of #54001 and after of the WA320-3, WA380-3, WA420-3 and WA470-3.

The markings ◇ and ◆ for the windshield glass represent glass colors and when blue glass is preferred, order for the part marked ◇ and when green glass is preferred, order for the part marked ◆.

(Color differences are also indicated by the stamping on the glass, namely, M356 stamping for the blue glass and M320 stamping for the green glass.)

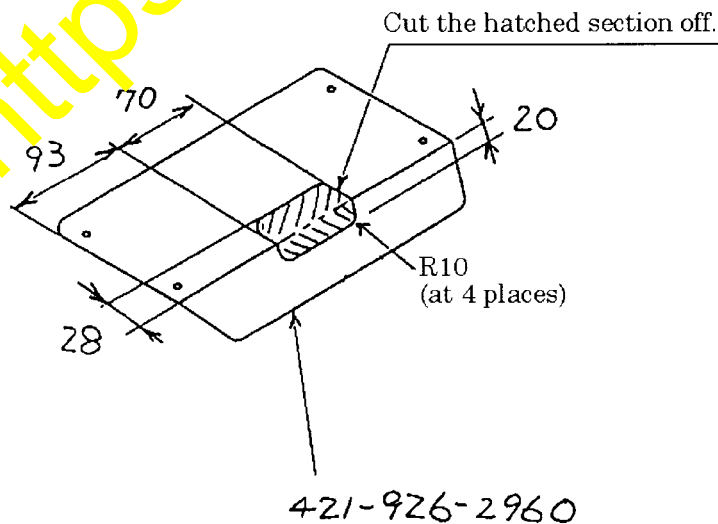
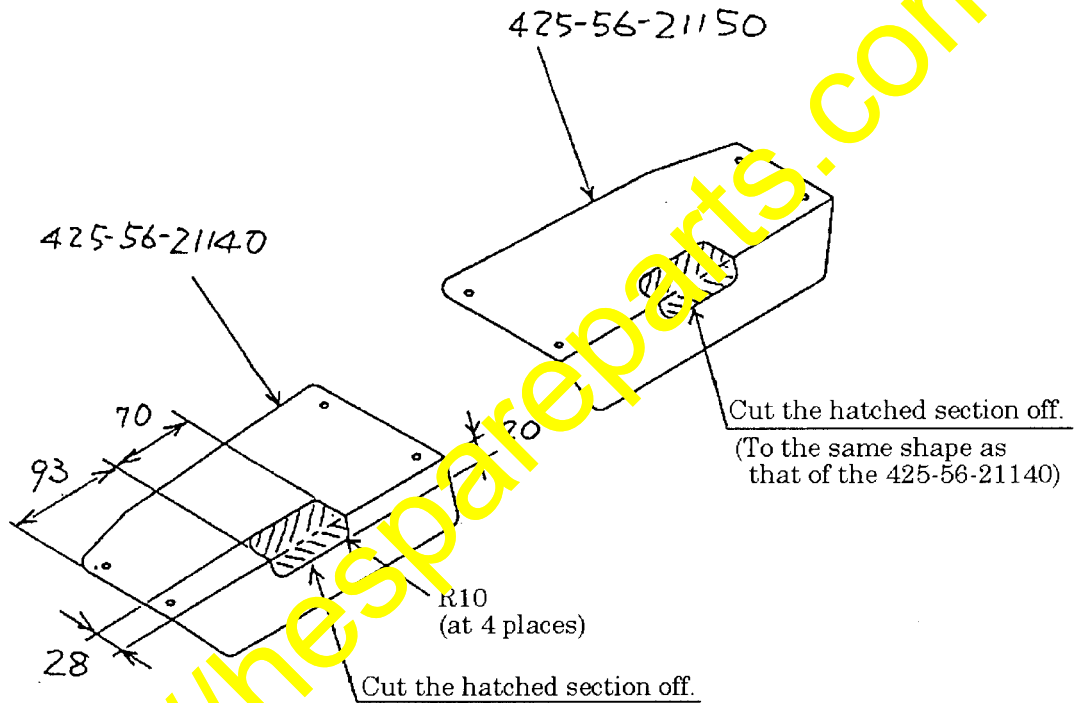
 Page added

{Reworking procedures for the previous working lamp covers}

If you have ordered for the previous working lamp covers (425-56-21140, 425-56-21150, 421-926-2960), rework them according to the designations in the schematic diagrams indicated below.

After reworking, their part numbers will be as follows, with their last numbers incremented by one, respectively.

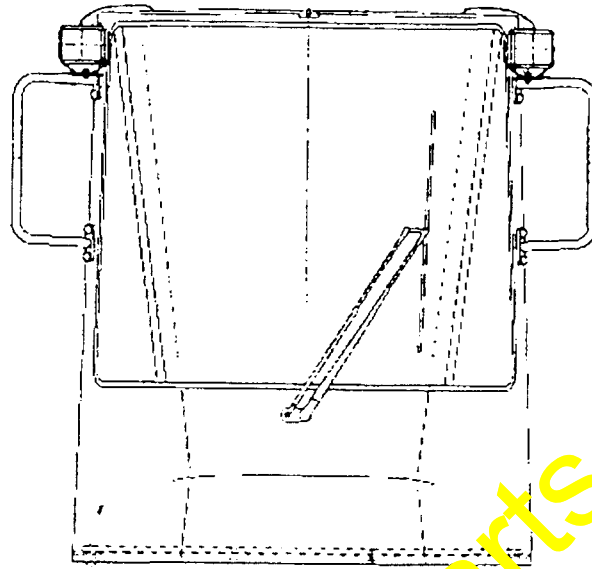
- | | | | |
|---|----------------------------------|-----------------|---|
| { | 425-56-21150 → 425-56-21151..... | 1 unit/machine | } |
| | 425-56-21140 → 425-56-21141..... | 1 unit/machine | |
| | 421-926-2960 → 421-926-2961..... | 2 units/machine | } |



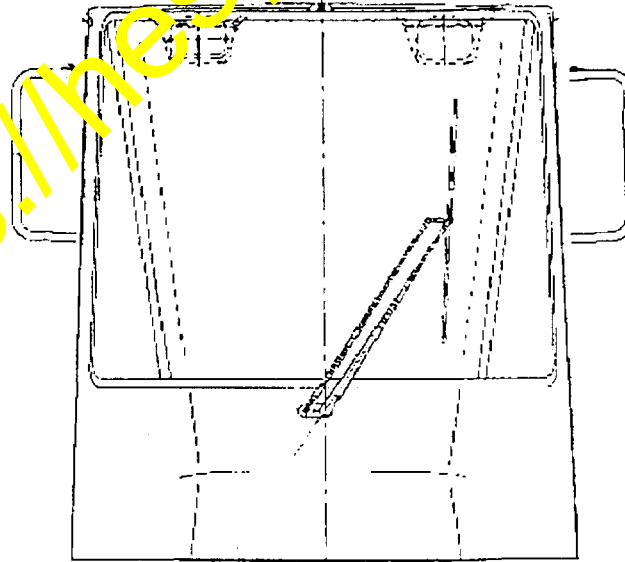
3. Contents of the improvement

The working lamps have been repositioned to the outer sides of the cab.

New locations



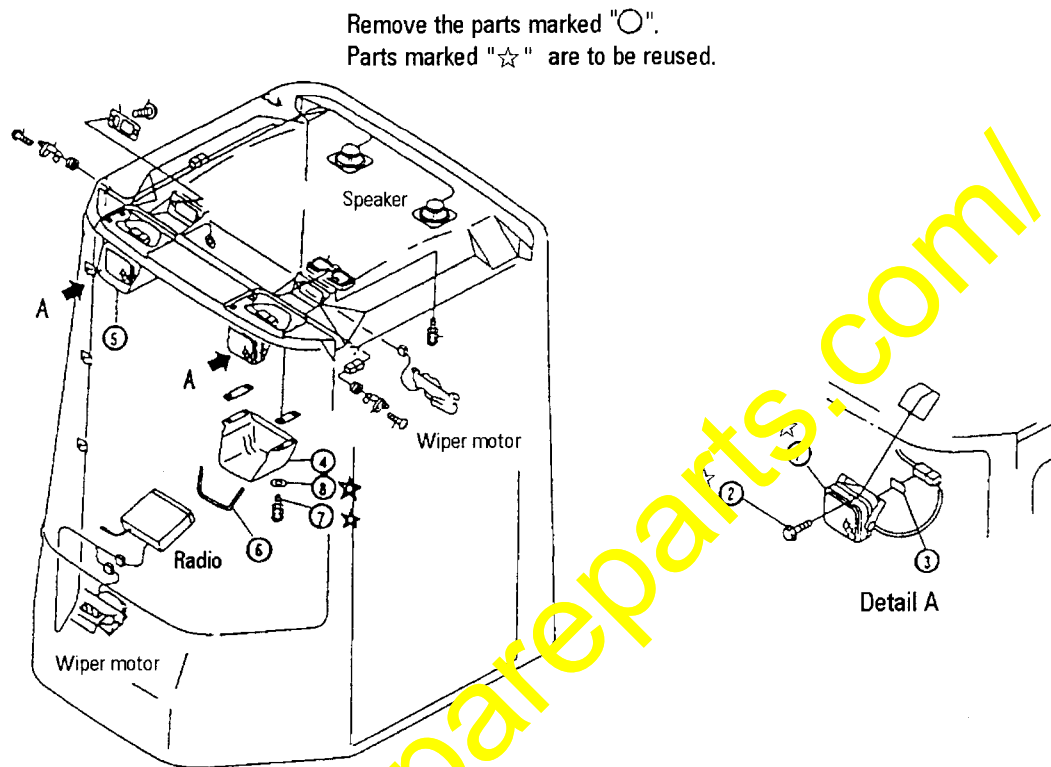
Current locations



4. Modification procedures

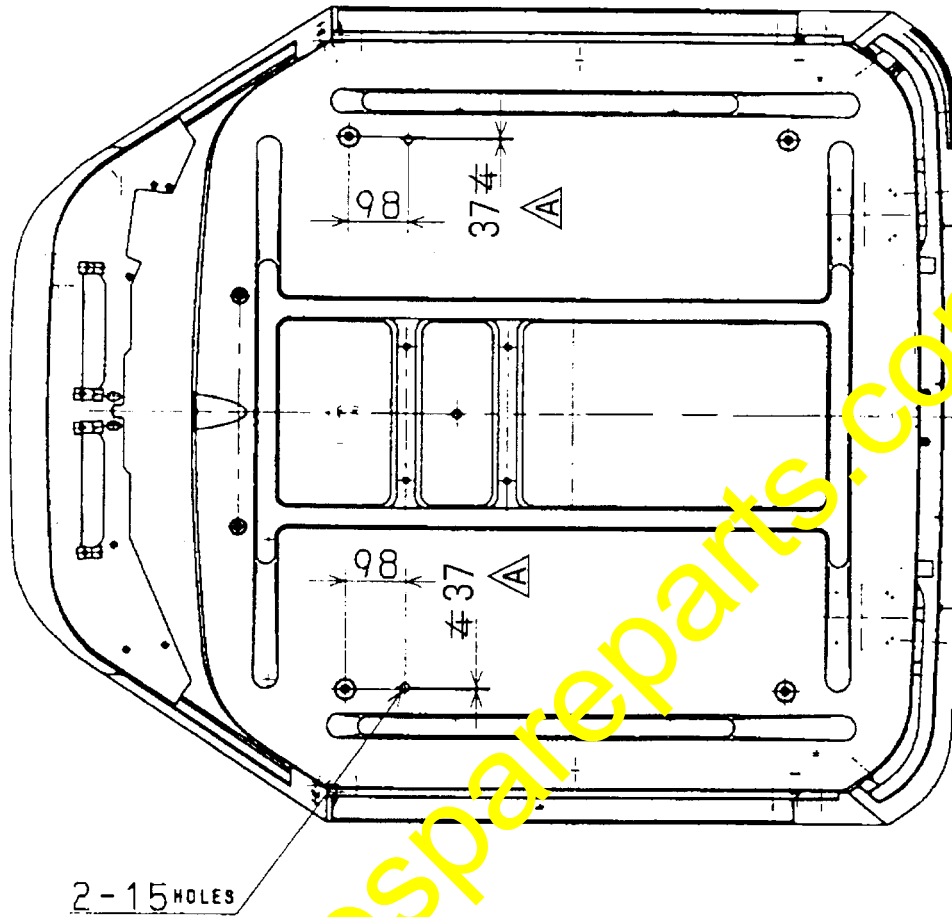
4-1 With WA120-3, WA180-3 and WA180PT-3

(1) Parts which need to be removed

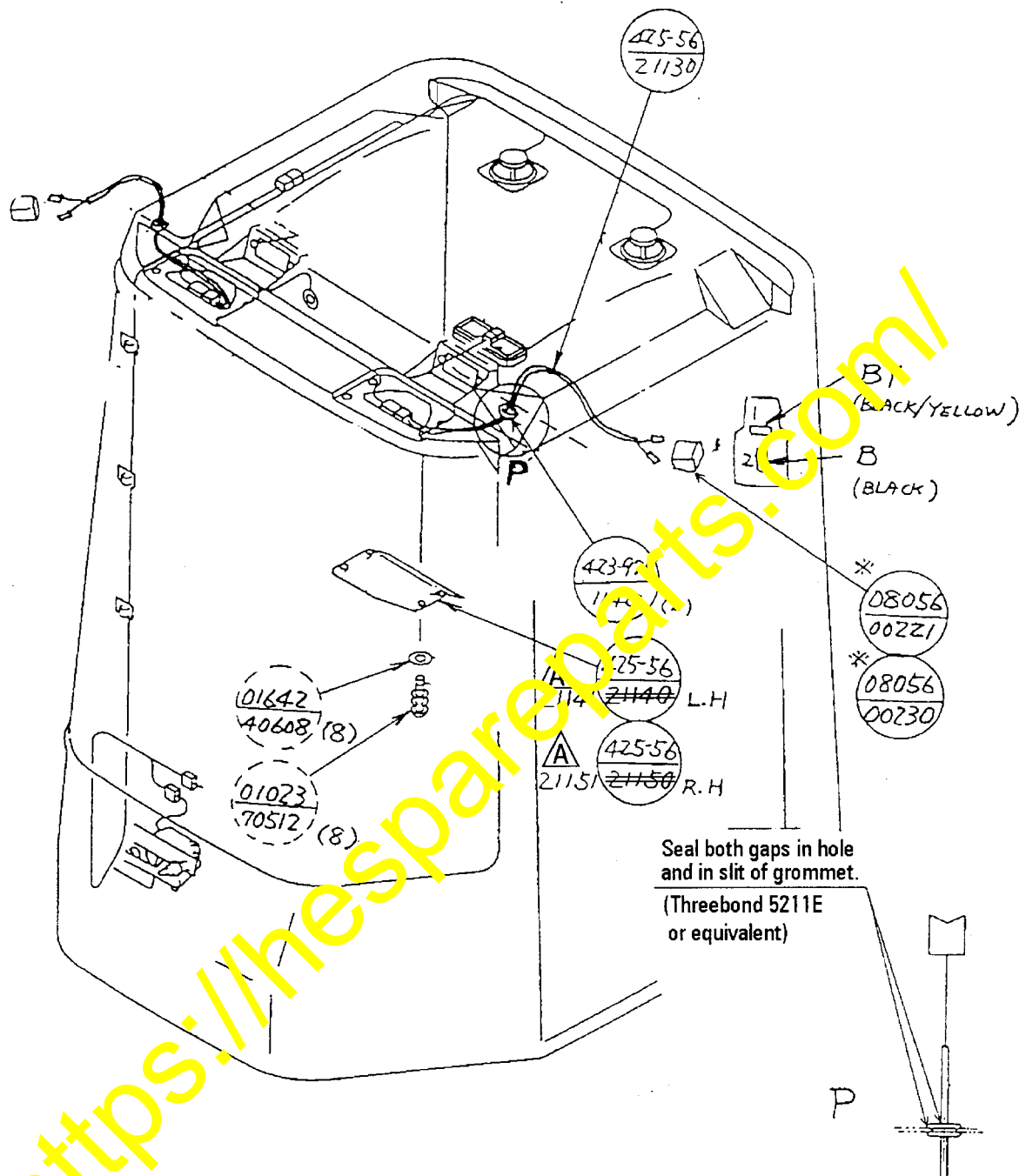


INDEX	PART NO.	DESCRIPTION	Q'TY
☆①	421-06-23360	. Lamp ass'y, work	2
☆②	01435-01220	. Bolt	2
③	421-56-21680	. Fastener	4
④	421-56-21330	. Cover, L.H	1
⑤	421-56-21340	. Cover, R.H.....	1
⑥	421-56-21350	. Seal	2
☆⑦	01023-70512	. Screw	8
☆⑧	01642-40608	. Washer	8

- (2) Reworking with the cab
Supplement holes to pass the working lamp harnesses in the roof.

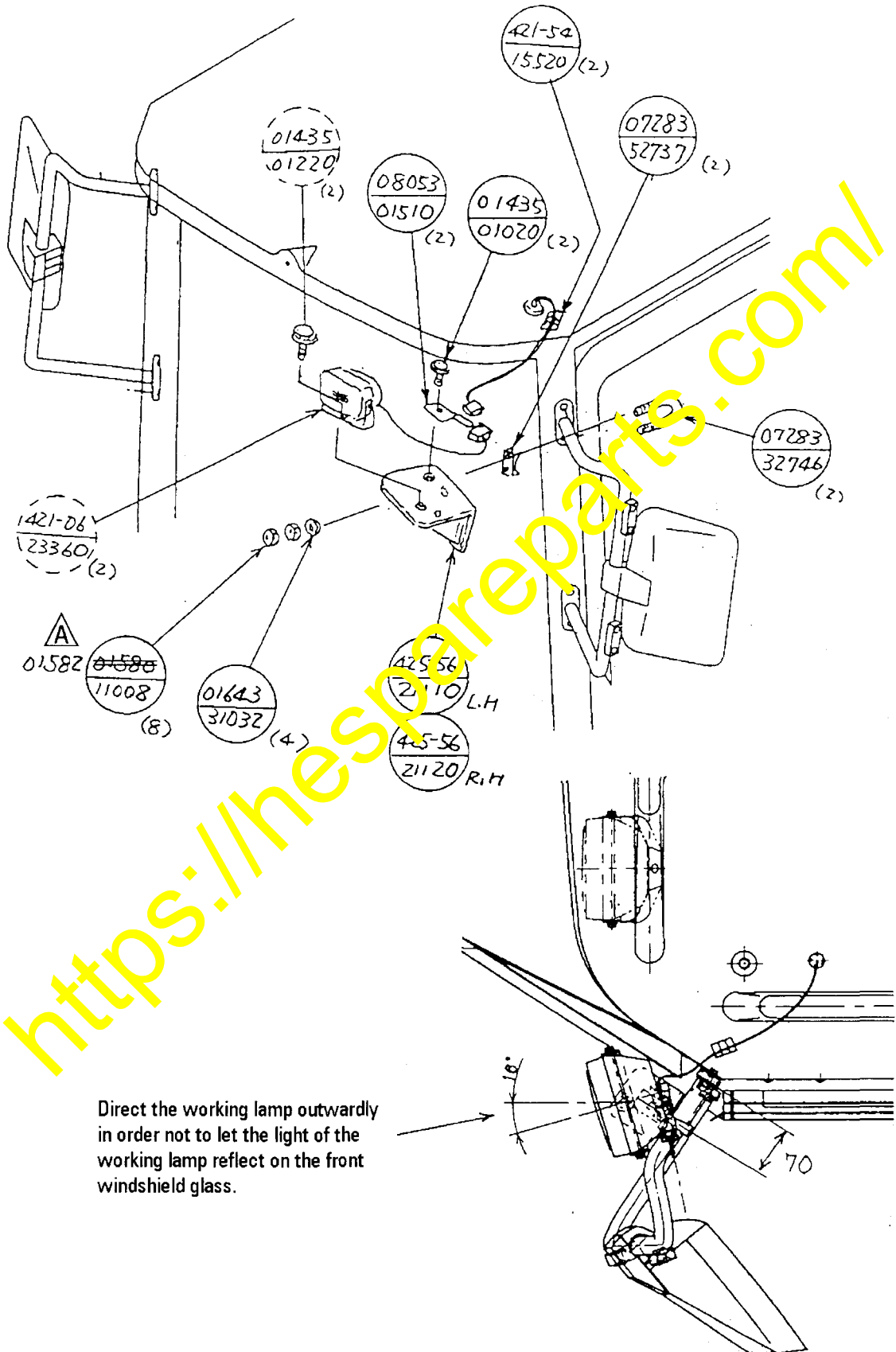


(3) Installation



- (1) The connectors (body and holder) marked * are accessories of the wire harnesses (425-56-21130) and connect them after installing the harness through the cab wall.
- (2) Seal all around the grommet (423-975-1140) and any gap occurring between the harness wire and grommet hole. (Section "P")
(Use the silicon sealant "THREEBOND 5211E" or an equivalent.)

Schematic diagrams indicated below are for the L.H side.
Make the same reworking on the R.H side also.

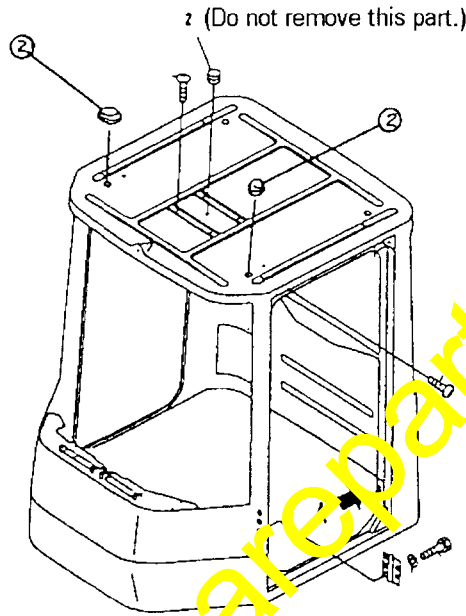


4-2. With the WA250-3, WA250PT-3 (of all the serial numbers) and WA320-3, WA380-3, WA420-3 and WA470-3 (with the serial numbers of up to 53999).

Modification procedures are the same as those for the WA120-3 and WA180-3 according to Section 4-1 except for the following points.

(1) Parts which need to be removed

Remove the following parts in addition to what are designated in Section 4-1 (1).



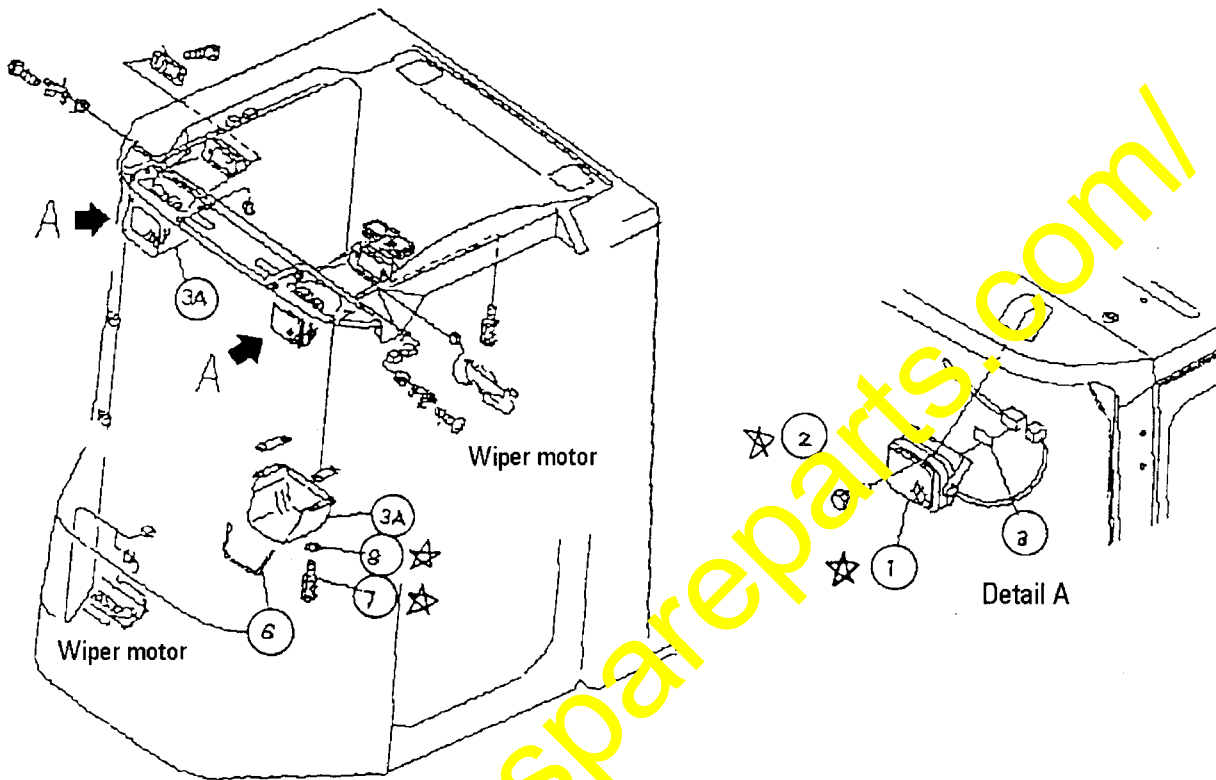
INDEX	PART NO	DESCRIPTION	Q'TY
②	09415-01008	. Cap	3

(2) Re-working of the cab according to Section 4-1 (2) is not necessary.
(Necessary holes are already opened.)

4-3. With the WA320-3, WA380-3, WA420-3 and WA470-3 (with the serial numbers of 54001 and after)

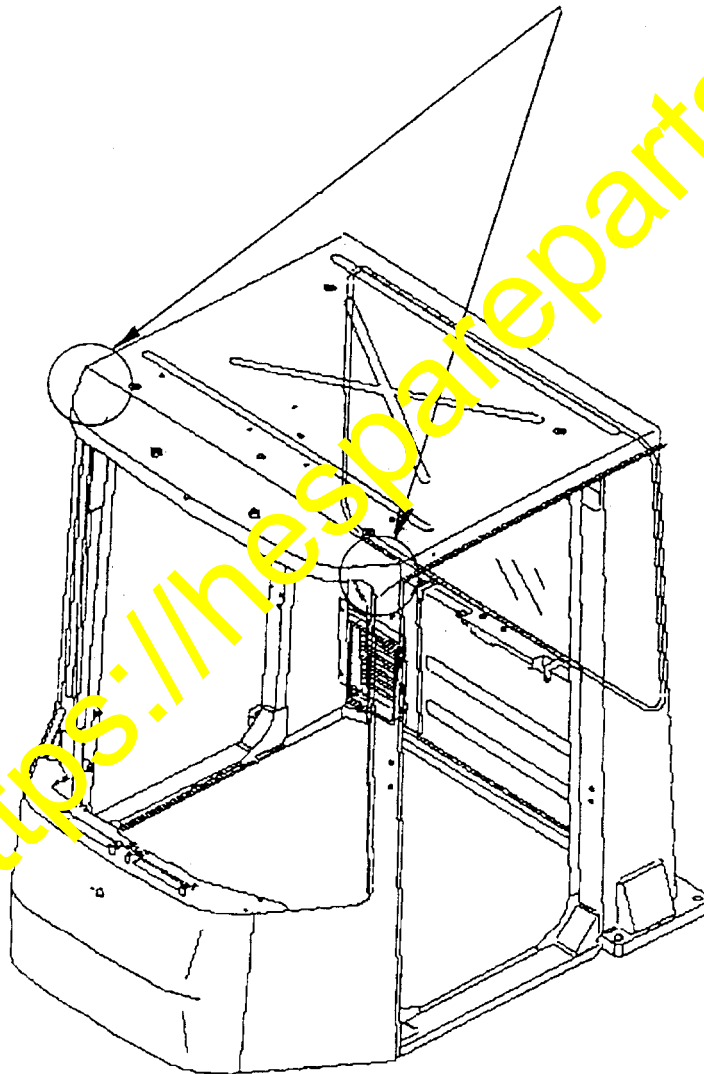
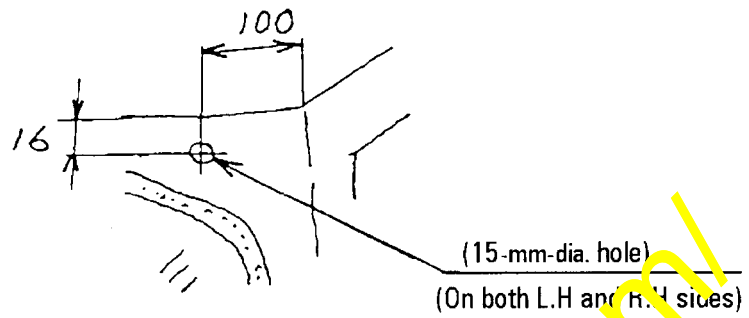
(1) Parts which need to be removed

Remove the parts marked ○.
 Parts marked ☆ are to be reused.

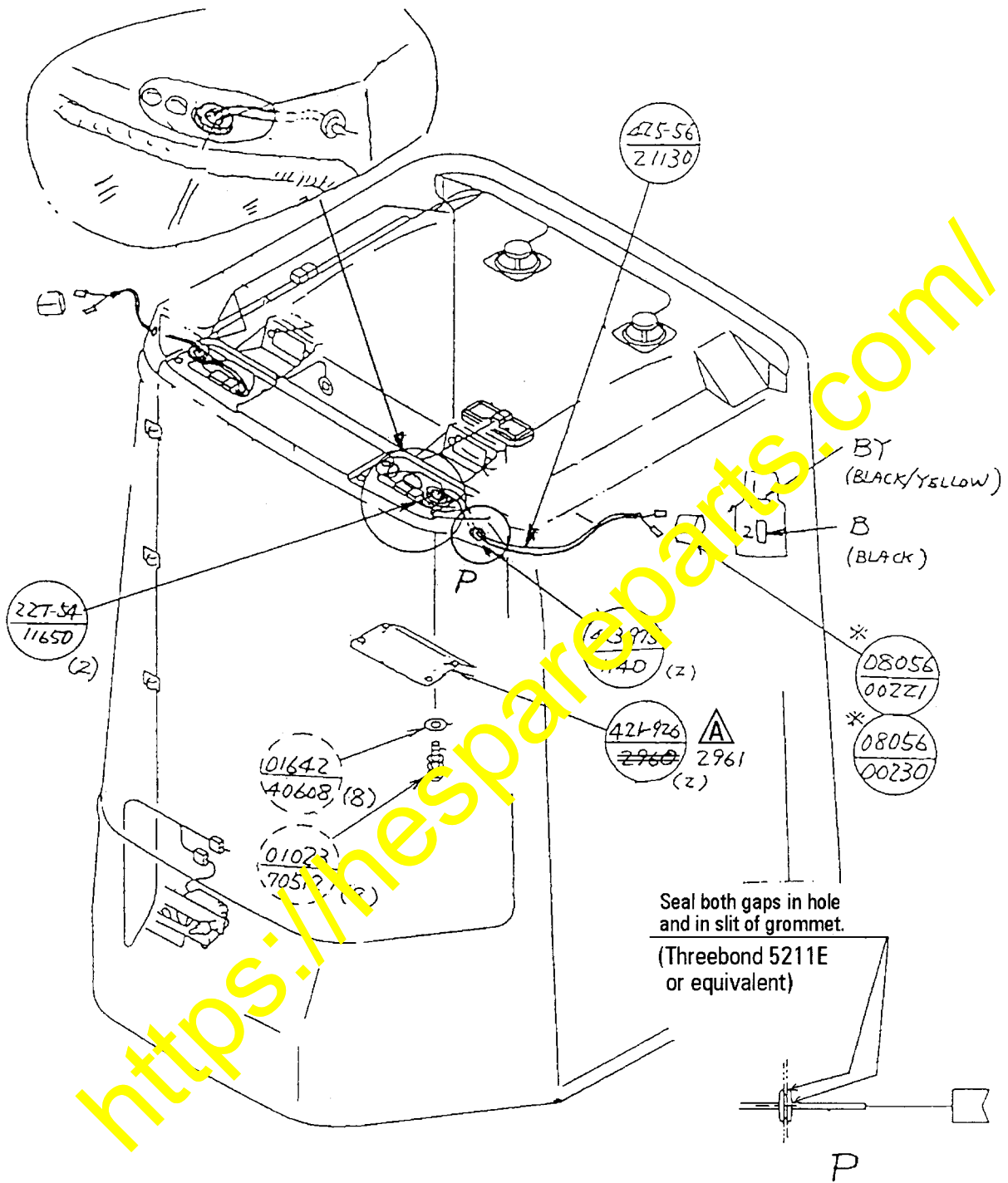


No.	Part NO.	Part Name	Q'ty
☆①	421-56-23360	. Lamp ass'y, work	2
☆②	01435-01220	. Bolt	2
③	421-56-21680	. Fastener	4
③A	424-926-2260	. Cover	2
⑥	421-56-21350	. Seal	2
☆⑦	01023-70512	. Screw	8
☆⑧	01642-40608	. Washer	8

- (2) Reworking with the cab
Supplement holes to pass the working lamp harnesses at two places on both sides toward front in the roof.

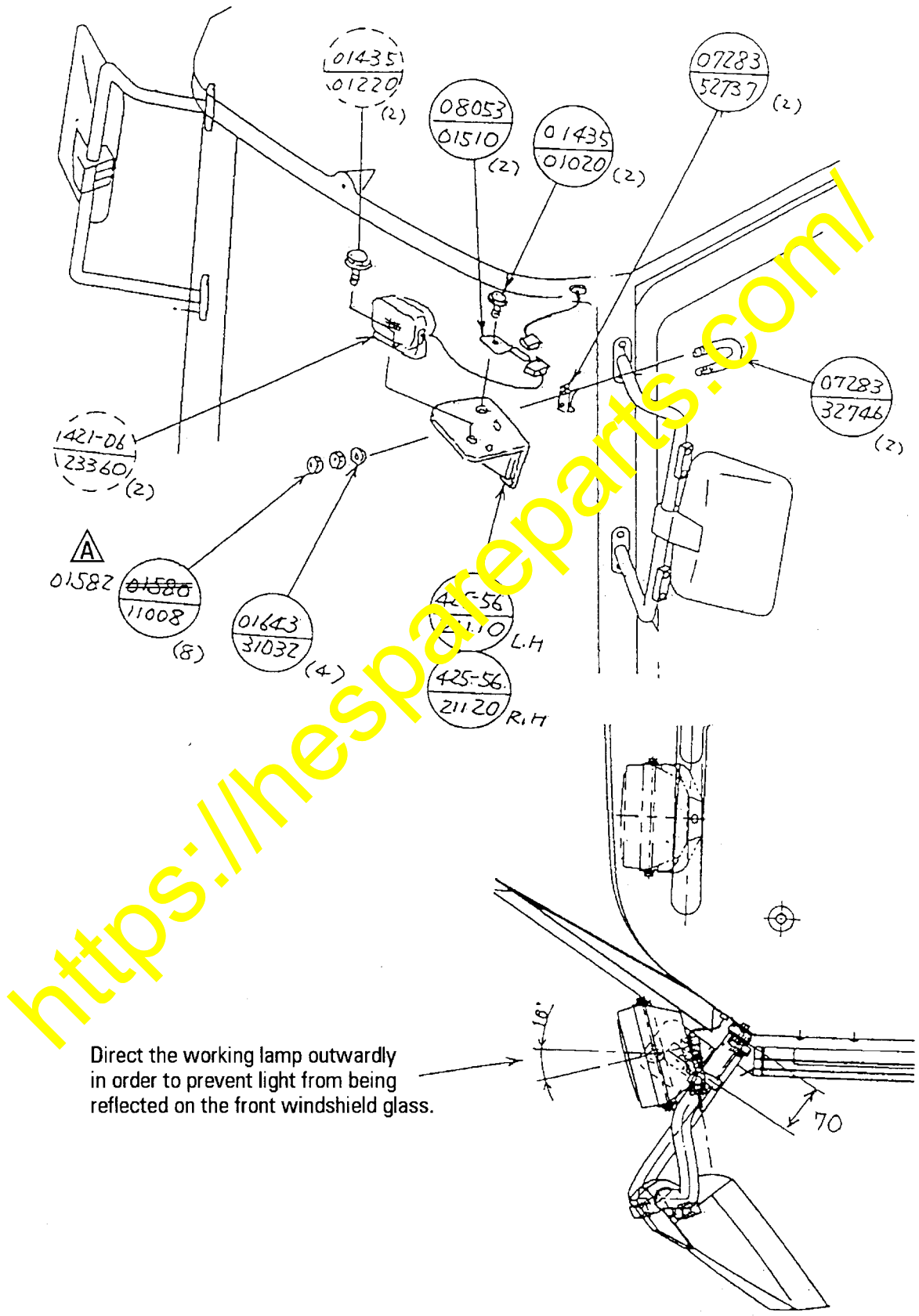


(3) Assembly



- (1) The connectors (body and holder) marked ※ are accessories of the wire harnesses (425-56-21130) and connect them after installing the harness through the cab wall.
- (2) Seal all around the grommet (423-975-1140) and any gap occurring between the harness wire and grommet hole. (Section "P")
(Use the silicon sealant "THREEBOND 5211E" or an equivalent.)

Schematic diagrams indicated below are for the L.H side.
 Make the same reworking on the R.H side also.

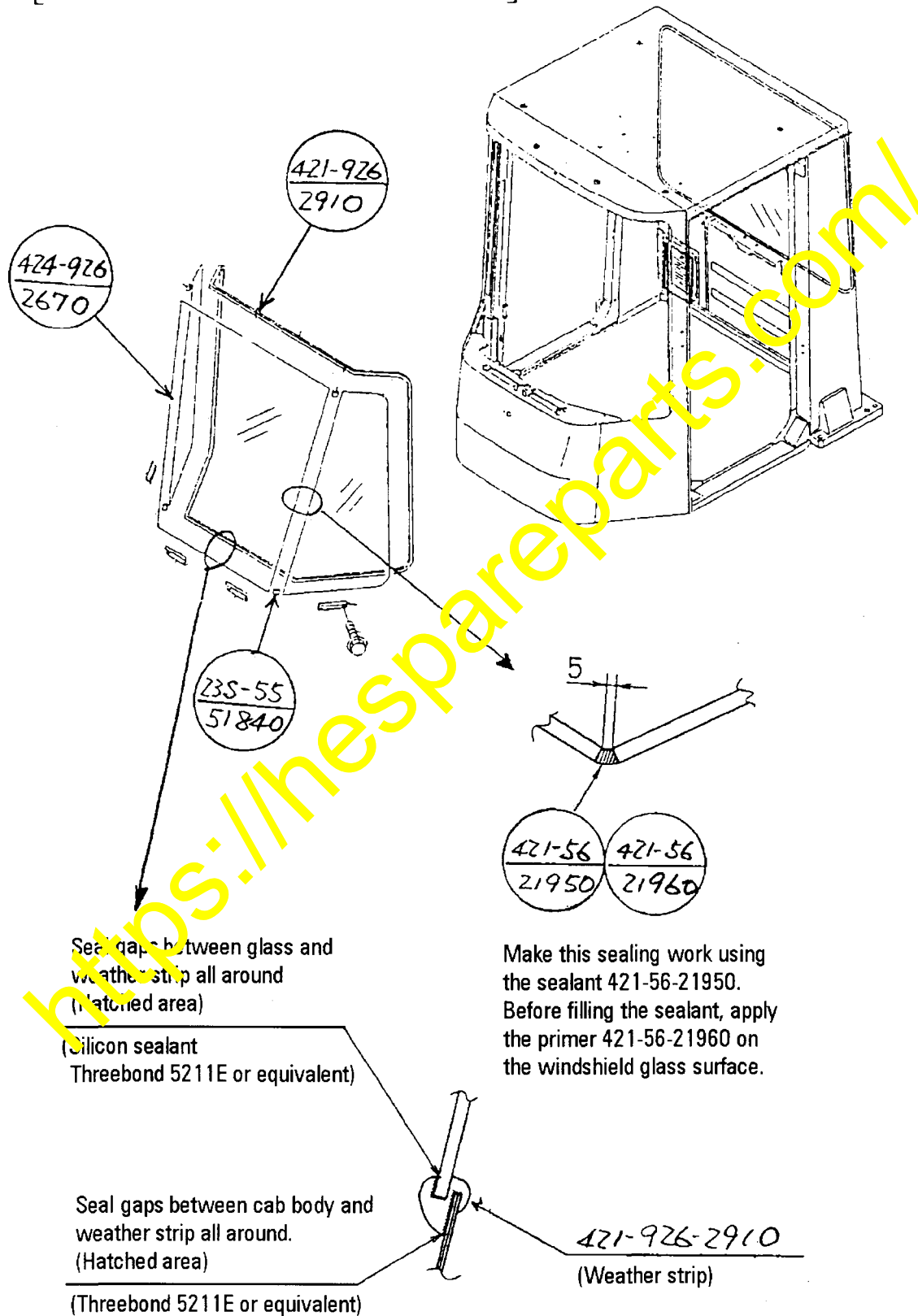


Direct the working lamp outwardly
 in order to prevent light from being
 reflected on the front windshield glass.

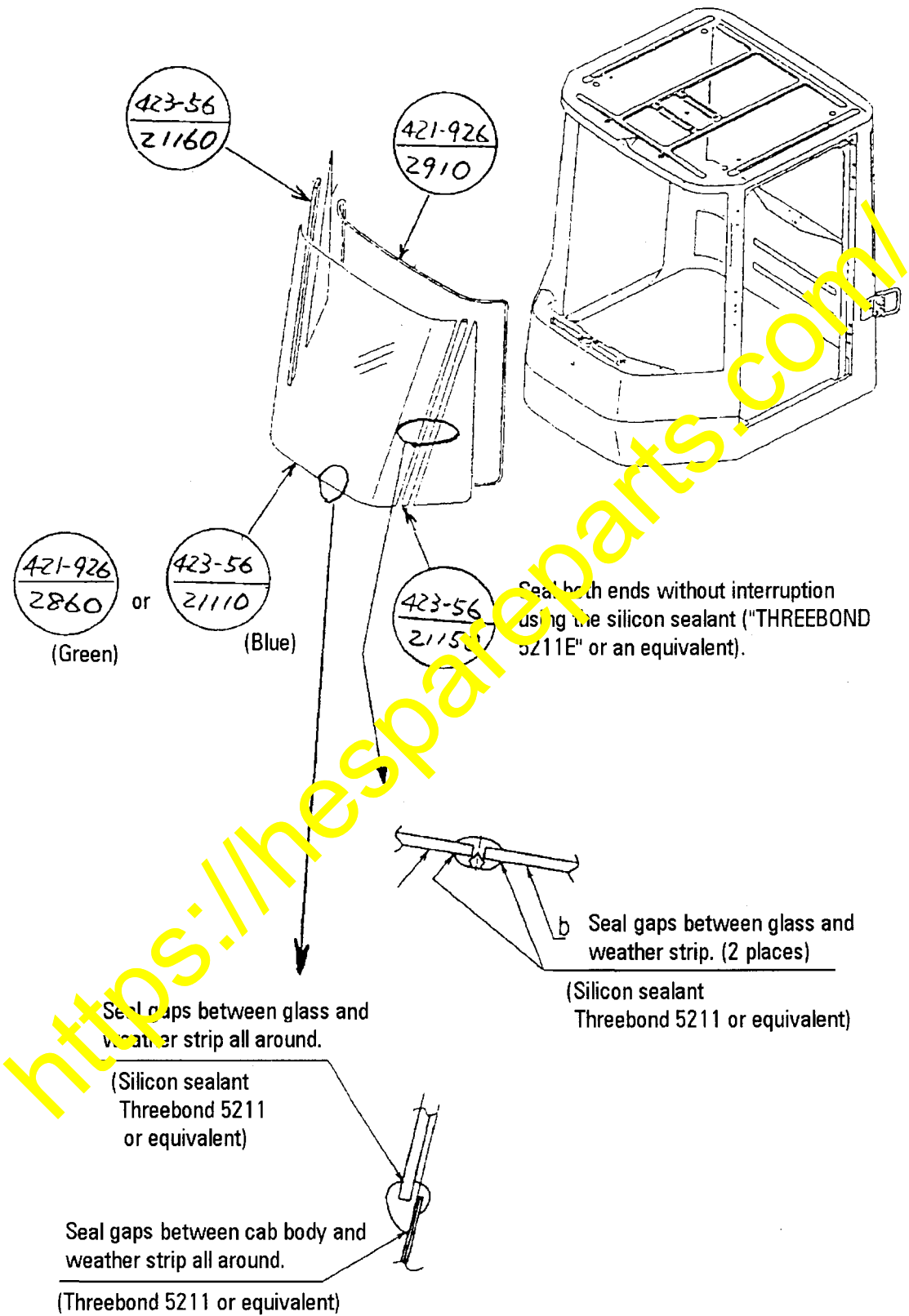
4-4 Windshield glass replacement procedures

(1) With the following models

[WA320-3, WA380-3, WA420-3, WA470-3,
WD420-3, WF450-3 and WF450T-3 with
the serial numbers of 54001 and after]



(2) With other models than what have been indicated on the preceding page.



5. Model names and serial numbers of the applicable machines

Applicable machine models	Serial numbers of the applicable machines	
	Already shipped machines	Machines being shipped newly from the factory
WA120-3	#50001 – #54014	#54015 and up
WA180-3	#50001 – #54086	#54087 and up
WA180PT-3	#50001 – #50044	#51001 and up
WA250-3	#50001 – #54024	#54025 and up
WA250PT-3	#50001 – #51004	#51005 and up
WA300L-3	#50001 – #54004	#54005 and up
WA320-3	#50001 – #54119	#54120 and up
WA320-3CS	#50001 – #54112	#54113 and up
WA380-3	#50001 – #54127	#54128 and up
WA420-3	#50001 – #54117	#54118 and up
WA470-3	#50001 – #54146	#54147 and up

<https://hespareparts.com/>