

INSTALLATION MANUAL

REF NO. BA00007

DATE July 7, 2000

(C)

Page 1 of 7

- SUBJECT:** INSTALLATION OF PAYLOAD METER (CARD TYPE)
- PURPOSE:** To introduce a card type payload meter newly prepared as an optional part and procedure for replacing the standard payload meter of a printer built-in.
- APPLICATION:** HD785-3 Dump Trucks, S/N 2190 thru 2193 and 2213 thru 2219
HD785-5 Dump Trucks, S/N A10228 and up
330M Dump Trucks, S/N Cf24120 and up
- FAILURE CODE:** DPF099
- DESCRIPTION:**

New payload meter of a card type is now available as an option and also provided with a printer built-in.

List of parts to be newly prepared:

NO.	PART NO.	PART NAME	QTY	REMARKS
1	561-86-67400 (7818-27-1001)	Control Box (Control Box)	1 (1)	
2	561-86-67960 (569-54-63770)	Bracket (Bracket)	1 (1)	
3	561-86-67910	Wiring Harness	1	
4	561-86-67920	Wiring Harness	1	
5	562-43-15810	Cap	1	
6	01220-40310	Screw	4	
7	01580-10302	Nut	4	
8	01641-20305	Washer	4	
9	561-86-67930	Bracket	1	
10	01010-51020	Bolt	2	
11	01580-11008	Nut	2	
12	01643-31023	Washer	2	
13	08036-01014	Clip	2	
14	01010-51020	Bolt	1	
15	01580-11008	Nut	1	
16	01643-31032	Washer	1	
17	561-86-67950	Resister	4	
18	08034-00834	Band	20	

3. Installation procedure

Numerals suffixed to Part Names as well as those given to Part No. on the drawings correspond to the same numerals in the List of parts to be newly prepared.

3.1 Reworking of parts (See Fig. 1.)

Drill 3 holes, 12.5 mm in dia. in the dump control cover (561-43-62112).

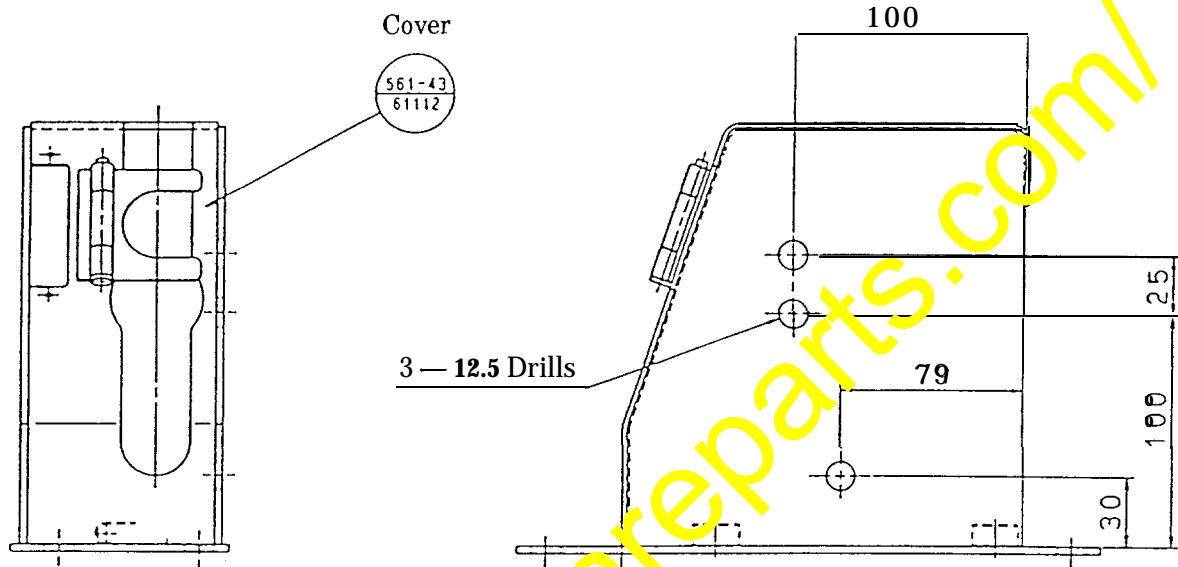


Fig 1 Reworking the dump control cover

3.2 Removal of the current control box (See Fig. 2.)

Open the cover (569-54-65160) at the operator's cab front, remove screws, and take the current control box (7818-27-1001) out of place. Disconnect the PMI connector and remove the control box.

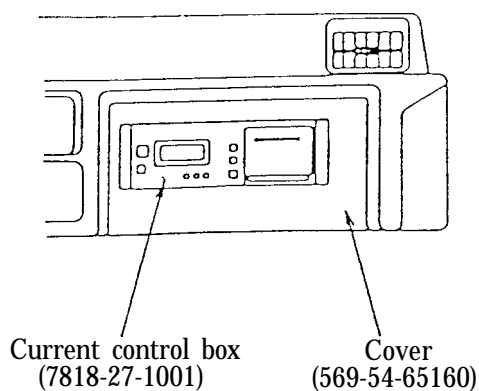
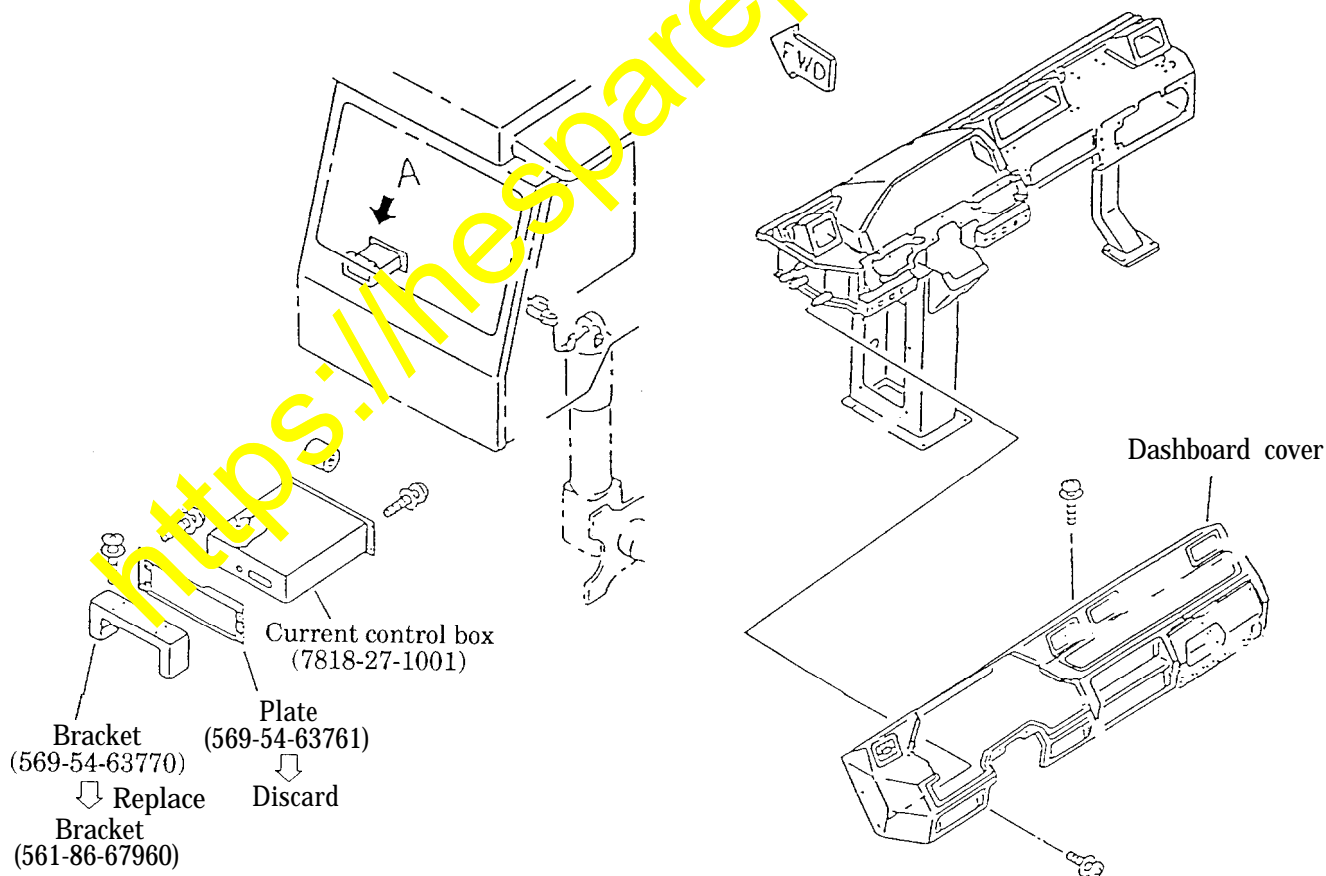


Fig. 2 Removal of control box

3.3 Replacement of bracket

(1) Remove the dashboard cover at the front of the operator's cab. Remove plate (569-54-63761) and bucket (569-54-63770). See Fig. 3.)



Detail of Portion A

Fig. 3 Removal of plate and bracket

- (2) Install a newly prepared bracket (2) (561-86-67960) and set the dashboard cover in place. (See Fig. 4.)

3.4 Wiring (See Figs. 4 thru 6.)

- (1) Remove the console box (569-54-63212) on the right side of the operator's seat.
- (2) Install the wiring harness (3) (561-86-67910).
Connect the connector PMI which was connected to the removed current control box to the wiring harness (3).
Connect resistor (17) (561-86-67950) to the wiring harness (3).
Connect the wiring harness (3) and the main harness together with MM-7 and su3.
- (3) Install the wiring harness (4) (561-86-67920).
Secure the wiring harness 4 to the dump control cover with clip (12) (08036-01014).
- (4) Secure the wiring harness with band (18) (08034-00834) on the way along the wiring.

3.5 Installation of the control box (See Figs. 4 thru 6.)

Pull connectors P-1 and P-3 out of the wiring harness (3) as well as connector P-21 out of the wiring harness (4). Then, connect these connectors to the newly prepared control box 1 (561-86-67400) and secure the connectors with the removed screws in place.

4. Application of the card type payload meter

- 1) For the application of the card type payload meter, refer to the Payload Meter Instruction Manual.
- 2) For materials required for the card type payload meter down-load (data output) and their processing program, refer to the Manual (P/M Data Processing Program Manual) (P/N 581-86-55680).

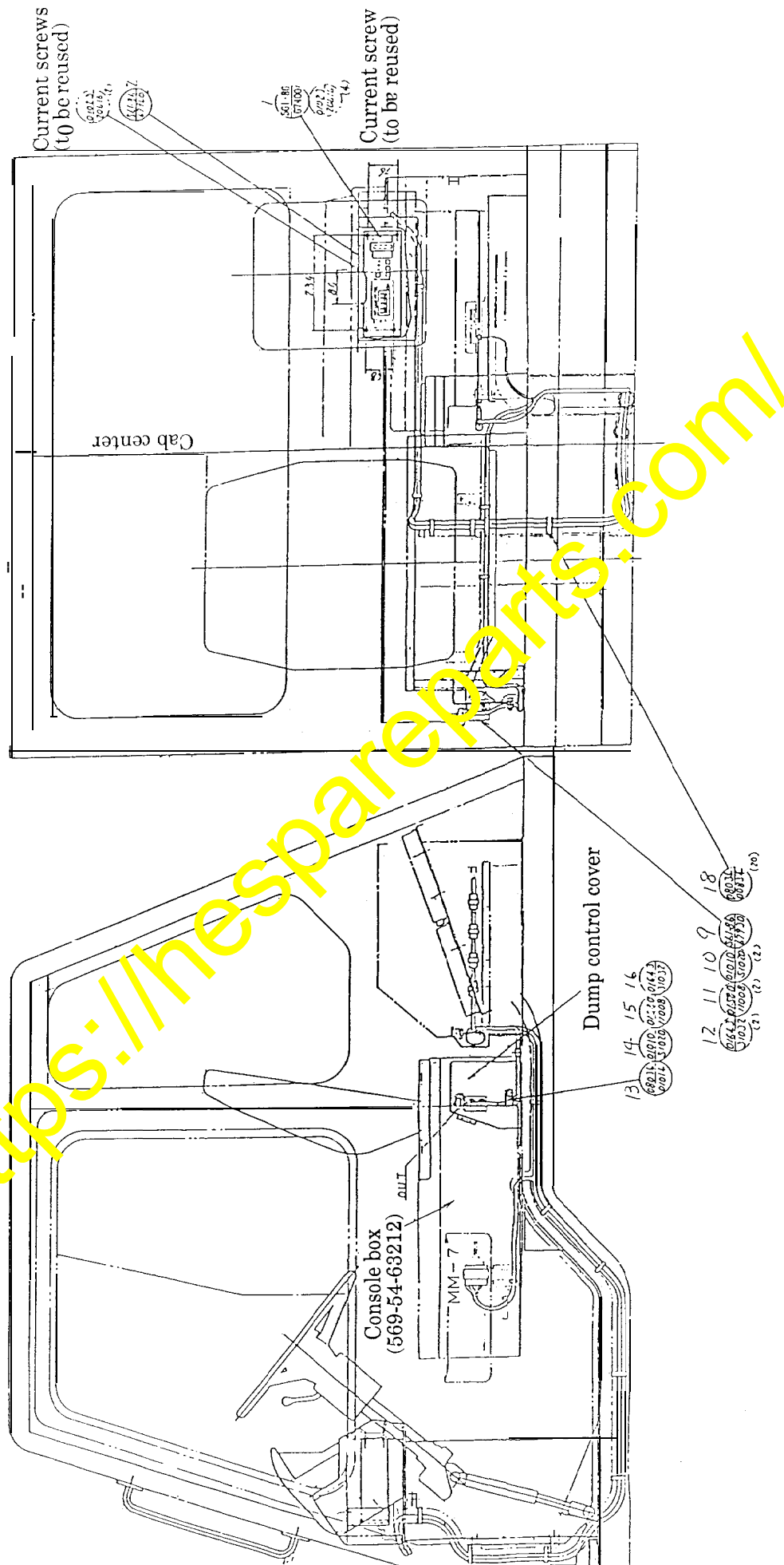


Fig. 4 Assembly drawing (Left side view & Right side view)

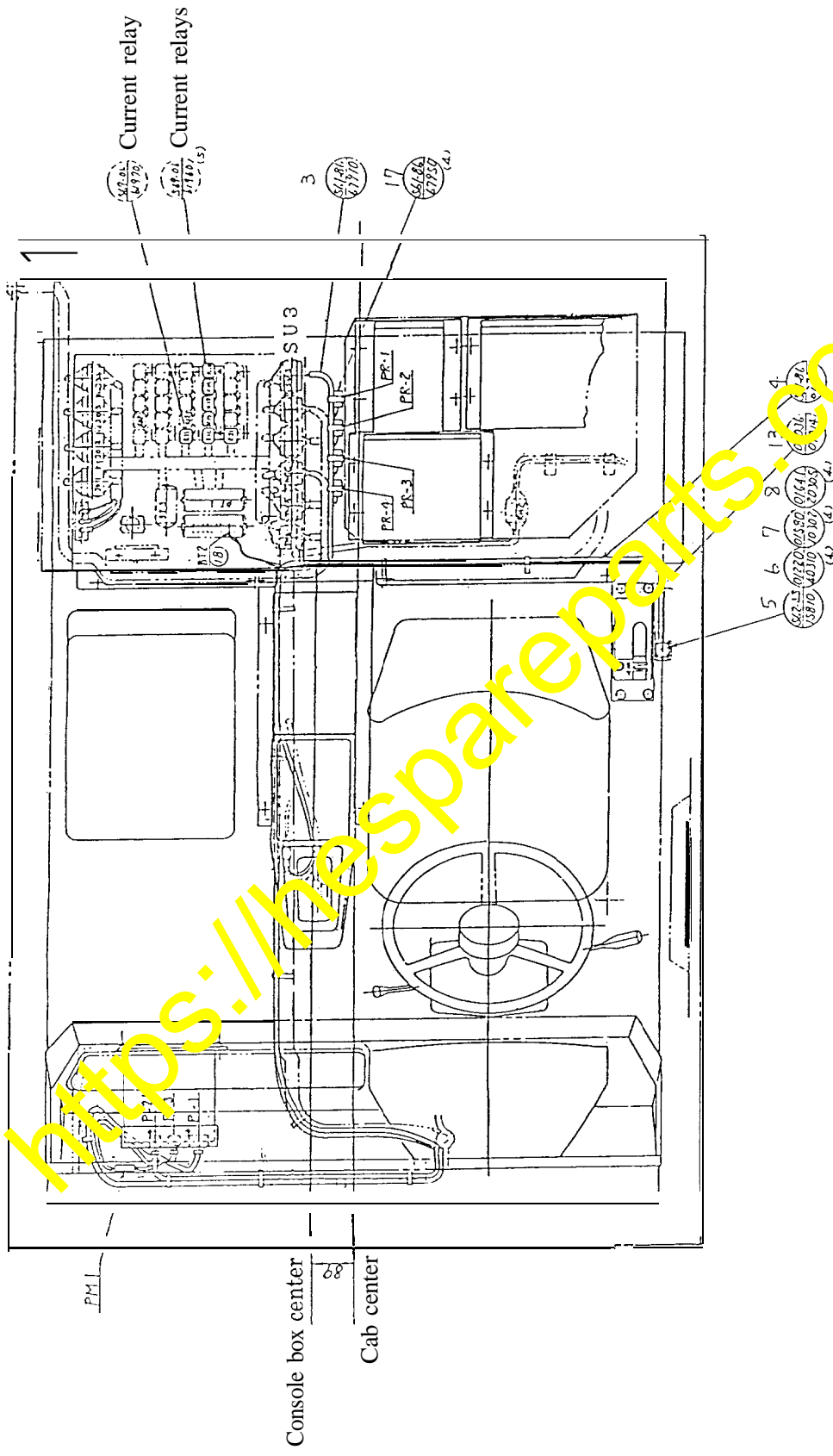
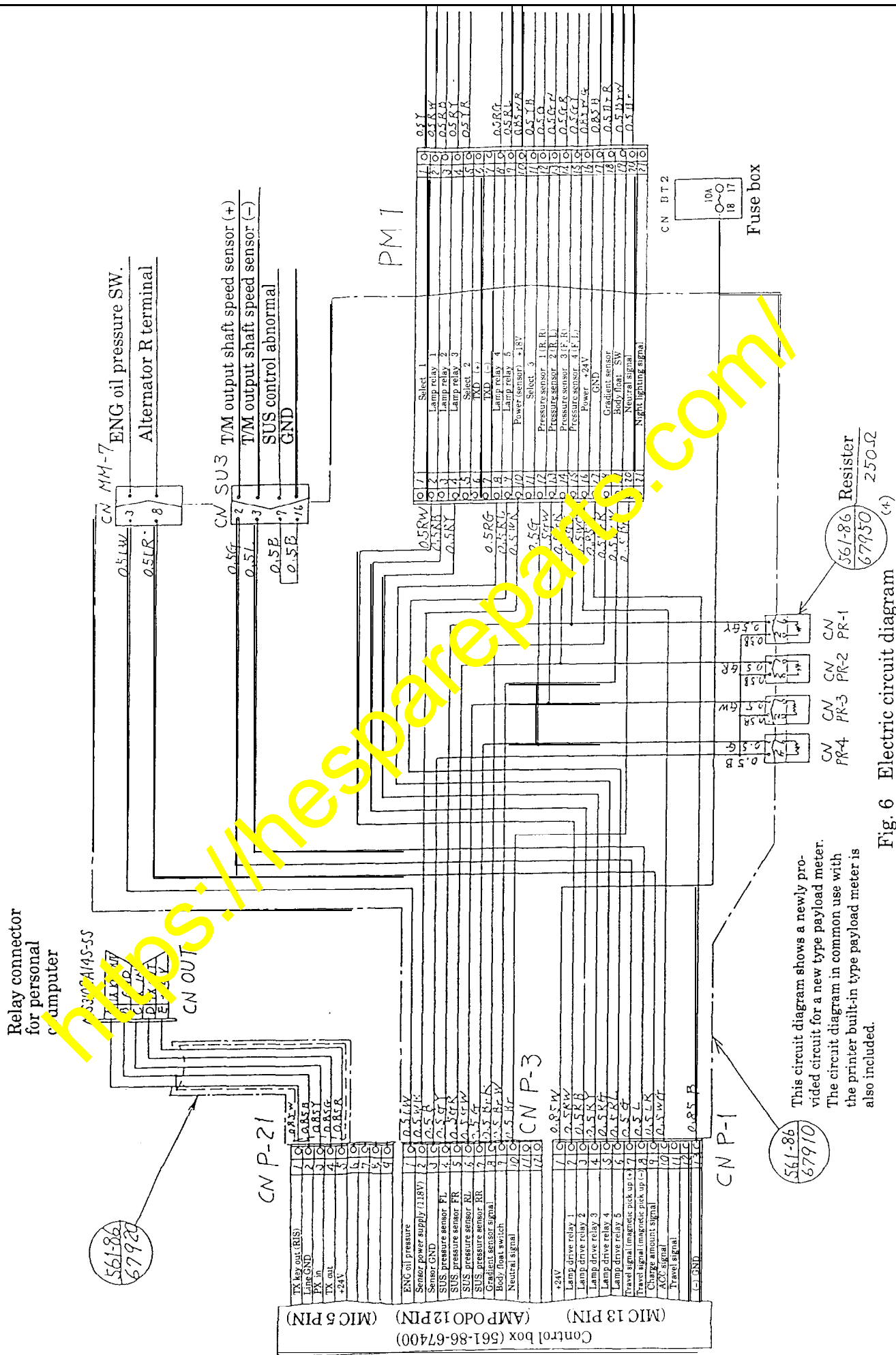


Fig. 5 Assembly drawing (Plan view)



This circuit diagram shows a newly provided circuit for a new type payload meter. The circuit diagram in common use with the printer built-in type payload meter is also included.

Fig. 6 Electric circuit diagram