

# INSTALLATION MANUAL

REF NO.	BT01059
DATE	Dec. 14, 2001

Page 1 of 3

**SUBJECT:** INSTALLATION PROCEDURE OF AIR INTAKE EXTENSION FOR AIR CLEANER ON WA1200-3

**PURPOSE:** To introduce the procedure for installing the air intake extension for air cleaner on the WA1200-3

**APPLICATION:** WA1200-3 Wheel Loaders, Serial Nos. 50001 and up

**FAILURE CODE:** 0210BK

## DESCRIPTION:

### 1. Introduction

An air intake extension for the air cleaner has been developed as an optional part in order to decrease the amount of sand and dust taken in to the air cleaner and extend the cleaning interval of the air cleaner when operating the machines at dusty sites like sand terrain. Carry out installation work following the procedure introduced in this installation manual if it is required.

### 2. List of parts

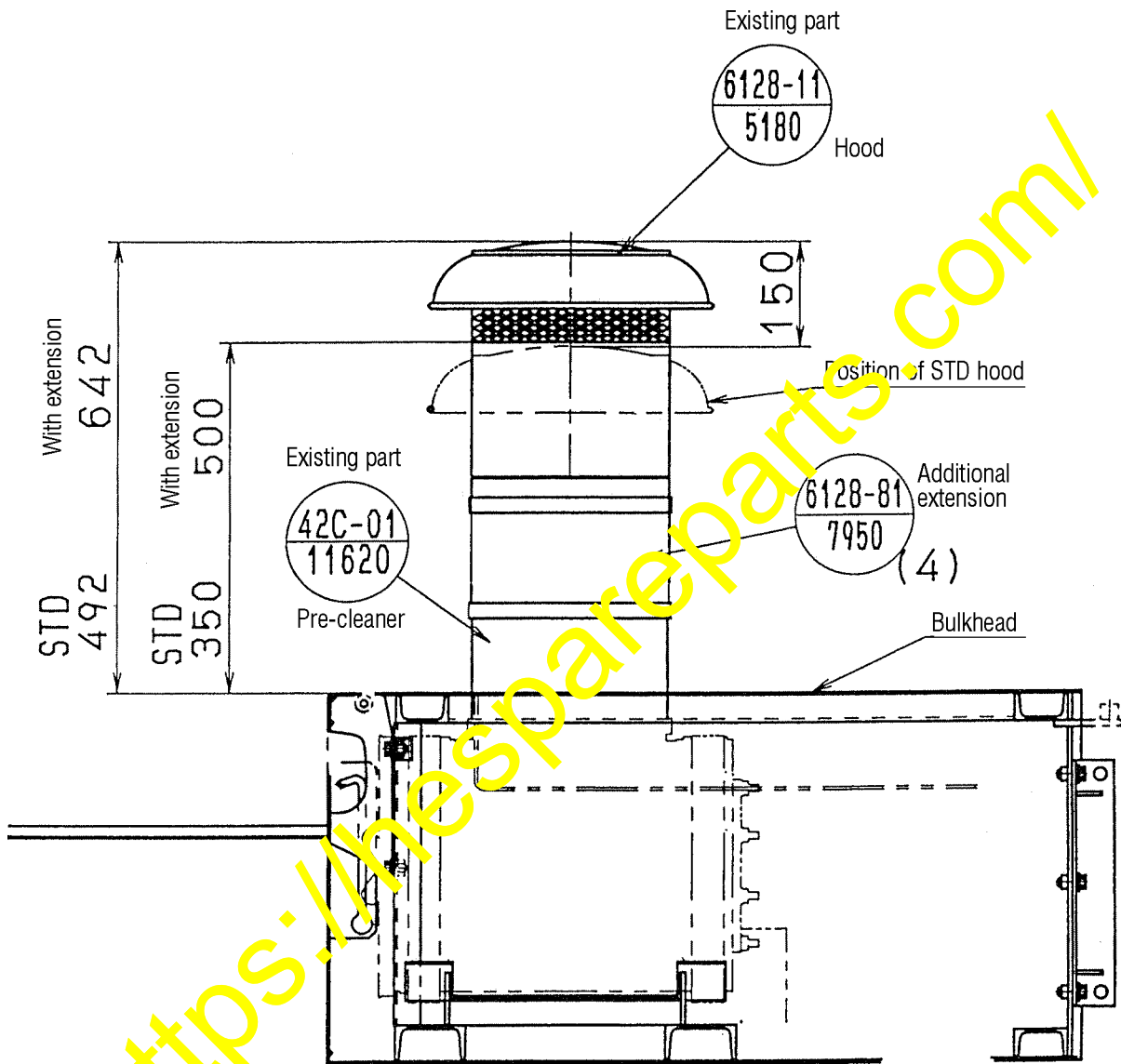
Part No.	Part Name	Q'ty	Remarks
6128-81-7950	Extension	4	
42C-54-11983 (42C-54-11982)	Cover (Cover)	2 (2)	
426-54-21590 (421-06-24230)	Bar (Bar)	2 (2)	

3. Procedure for assembly

(1) Installation of extension

Install four extensions (Part No. 6128-81-7950) in total between the hood (Part No. 6128-11-5180) and the pre-cleaner (Part No. 42C-01-11620).

Apply black coating to the extensions.



As viewed from the left side of the vehicle

(2) Replacement of air cleaner front cover

If the existing air cleaner front cover is used after installation of the extensions, the opening angle of the cover needs to be changed to prevent interference with the air inlet hood when the cover is opened fully.

Replace the following parts:

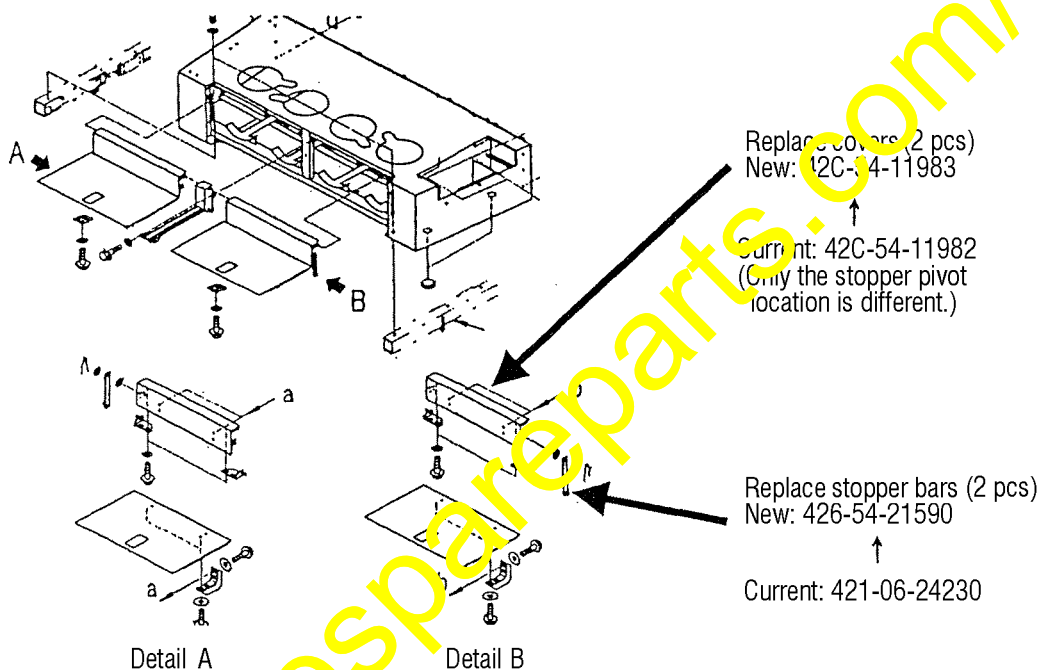
Covers (2 pcs)

(New Part No. 42C-54-11983 ← Current Part No. 42C-54-11982)

Stopper bars (2 pcs)

(New Part No. 426-54-21590 ← Current Part No. 421-06-24230)

For other mounting parts or the like, reuse the current parts.



Relation with the hood when mounting new cover

