

INSTALLATION MANUAL

REF NO. BT04138

DATE Sept. 28, 2004

Page 1 of 3

SUBJECT: HEAT SHIELDING COVER FOR PROTECTION OF THE ENGINE AIR INTAKE HOSE ON WA1200-3

PURPOSE: To inform field personnel

APPLICATION: WA1200-3 Wheel loader S/N 50001 thru 50030

FAILURE CODE: 02A1DC

DESCRIPTION:

1. Introduction

Cracks or thermal hardening may occur on the air intake hose by the radiation heat coming from the engine air intake manifold. As a heat shield has been available to protect the air intake hose for the radiation heat, follow this Service News when installing it.

2. List of parts

Part No.	Part Name	Q'ty	Remarks
42C-01-13190	Cover	2	
07289-00170	Clamp	6	

1. Installation of the heat shield

- (1) Install the heat shield to protect the air intake hoses at 2 places with arrow marks in Fig. 1.
(Since the hose marked * is located at a place where radiation heat does not come it is not necessary to install the heat shield.)

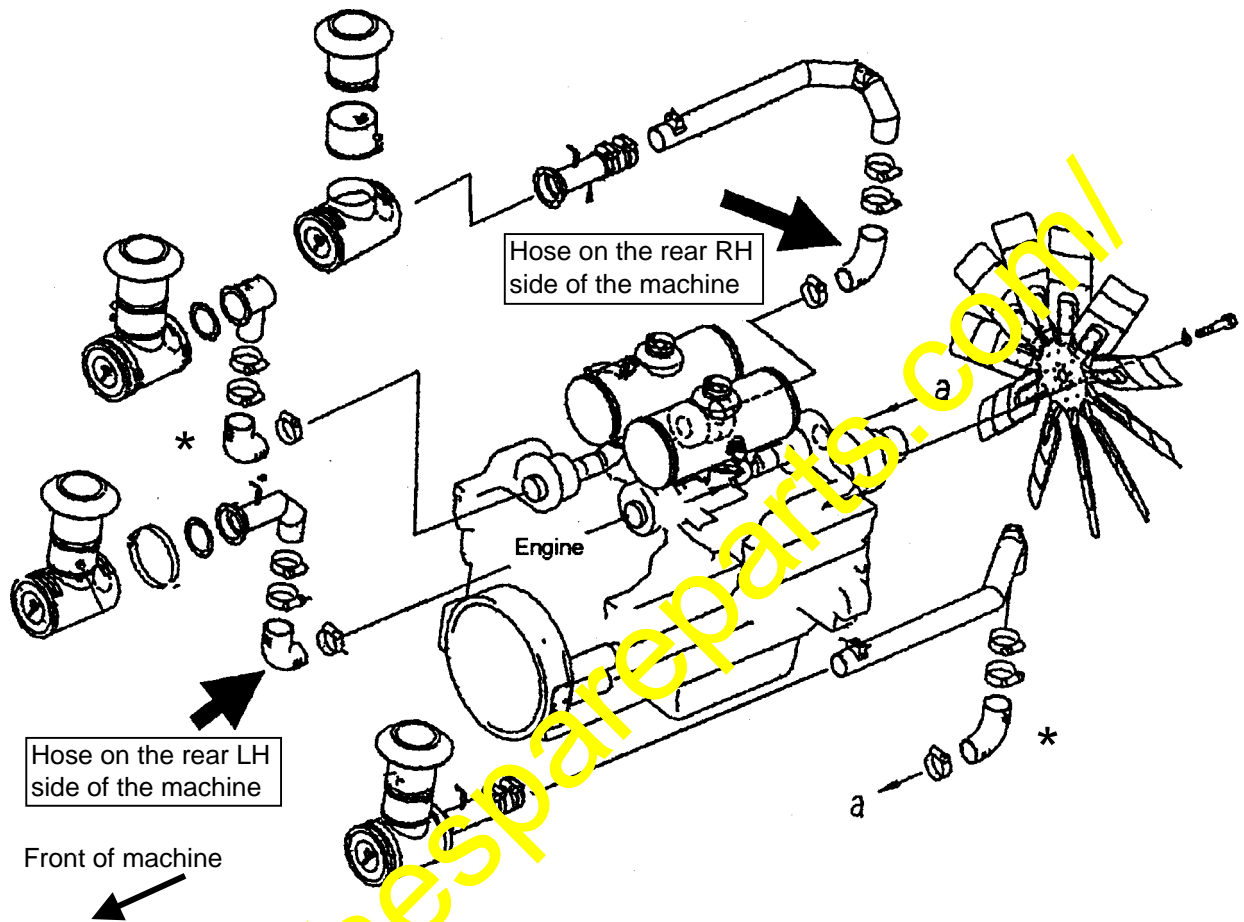


Fig. 1

(2) Installation procedure for the heat shield

- <1> Wind the heat shield (42C-01-13190) around the air intake hose.
- <2> Overlap the cutouts of the heat shield so that open space may not occur and, after that, tie the wires being attached to the heat shield.
- <3> Fix the heat shield to the air intake hose using 3 pcs. of the clamps (07289-00170).

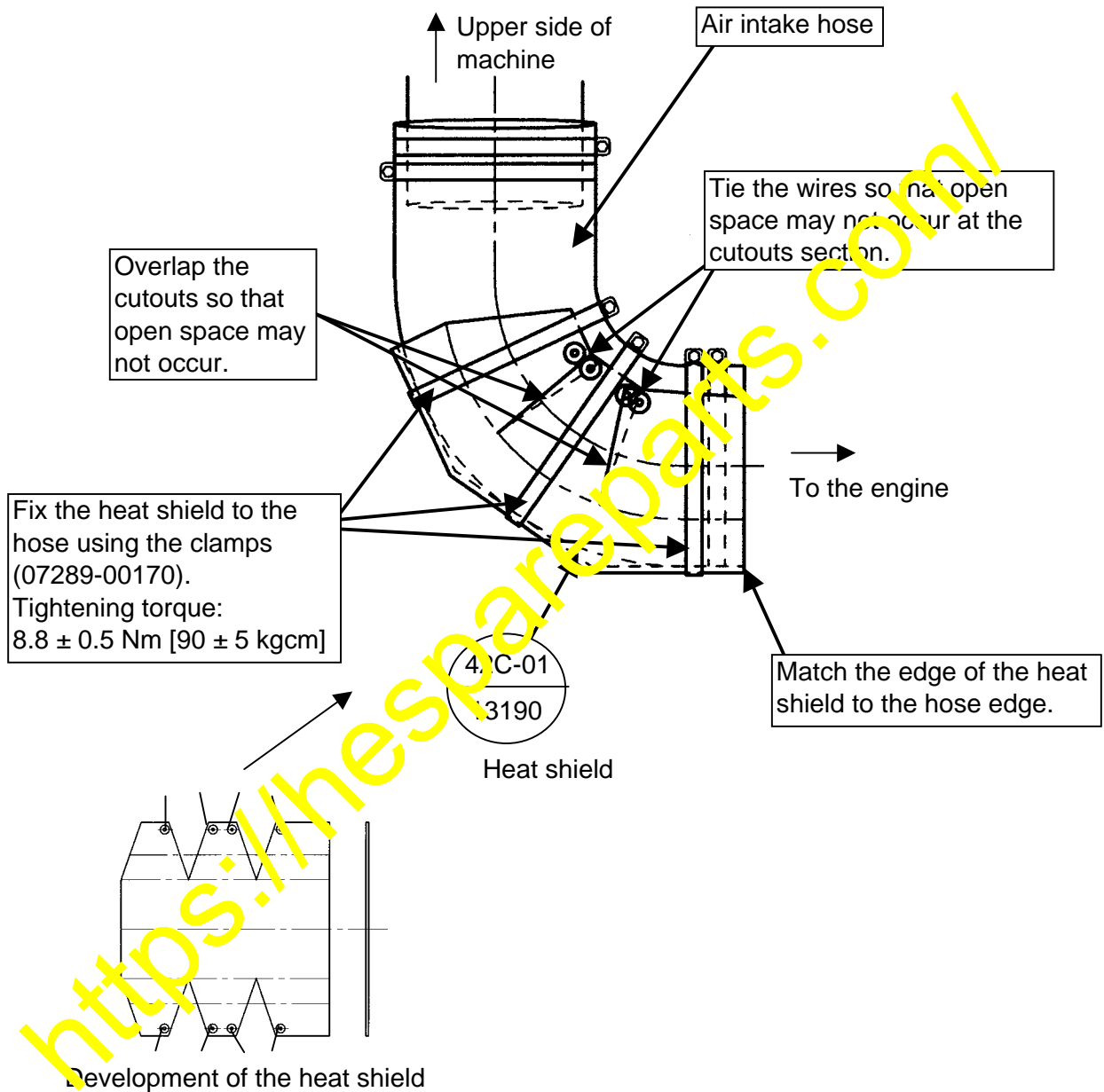


Fig. 2