

INSTALLATION MANUAL

REF NO.	BT98045A
DATE	Feb. 13, 2002

Page 1 of 3


This INSTALLATION MANUAL supersedes the previous issue No. BT98045 dated Dec. 28, 1998 which should be discarded.

SUBJECT: INTRODUCTION OF IMPROVED AIR RESERVOIR ON HD325-5, HD325-6, HD405-6, HD255-5



PURPOSE: To introduce strengthened air reservoir for use on HD325-5, HD325-6, HD405-6 and HD255-5 dump trucks



APPLICATION: HD325-5 Dump Trucks, Serial Nos. 2001 thru 4293
 HD325-6 Dump Trucks, Serial Nos. 5001 and up
 HD405-6 Dump Trucks, Serial Nos. 1001 and up
 HD255-5 Dump Trucks, Serial Nos. 1001 and up


FAILURE CODE: 451AFF

DESCRIPTION:


1-1. Introduction

With dump trucks of the above models being used for hauling and disposing of rock at work sites where blasted rock (of a meter or more of a side) are loaded onto them without crushing, (especially when the vehicle body is not equipped with rubber liners,) loading impact is very high and cracks may occur in the weld joints of the air-reservoir relay valve mounting bosses.

This Service News introduces a strengthened air reservoir with reinforced weld portions of the bosses for use on the dump trucks being used under these working conditions.

 { Although this modification was already introduced in the Service News No. BT98045, this Service News will introduce it once again since the applicable models have been increased. }

1-2. Revised places.

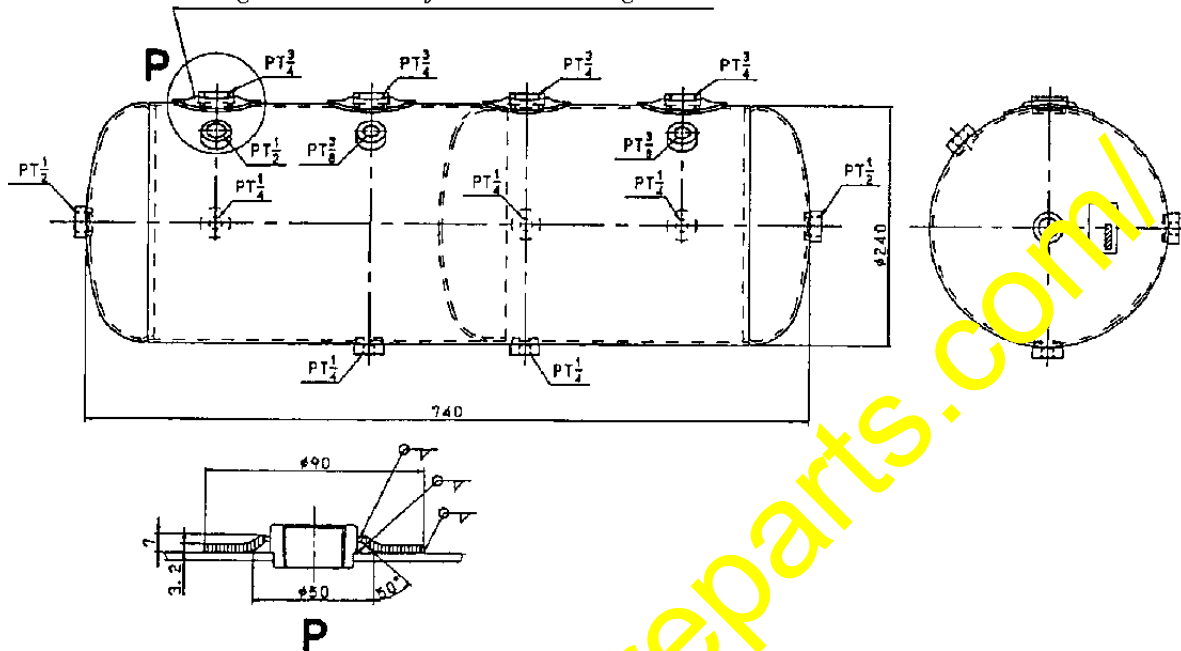
4 places 	Feb. 13, 2002	Added the applicable model and changed the issuance number.
--	---------------	---

2. Lis. of parts

Part No.	Part Name	Q'ty	Remarks
566-35-6A670 (566-35-42670)	Air reservoir (Air reservoir)	1 (1)	

3. Contents of the strengthening modification with the air reservoir
Reinforcing plates have been supplemented to strengthen the relay valve mounting bosses.

Reinforcing plate has been supplemented to strengthen each relay valve mounting boss.



4. Installation procedures

- 1) Replace the air reservoir 1 with the strengthened air-reservoir.
Remove the piping and equipment being connected or installed to the air reservoir and connect them or install them to the new strengthened air reservoir after installing it.

